



Comfort Plus Homestm

**Building & Design
Ideas**



Comfort Plus Homes™

Comfort Plus Homes Goals

- **Energy Efficiency**
- **Occupant Safety**
- **Occupant Health**
- **Durability**
- **Occupant Comfort**
- **Environmental Impact**
- **Affordability**



Comfort Plus Homes Advantages

- **Comfortable and Quiet**
- **Plenty of Natural Light**
- **Healthier Indoor Environment**
- **Higher Winter Humidity Levels**
- **Suitable for Any Lot**
- **Conventional Construction Techniques**
- **Heats for \$100-\$300 per Year**
- **Less Expensive to Own**



Could It Be Less Expensive?

- **A Comfort Plus Home is durable, requiring less maintenance**
- **Lower energy costs offset additional mortgage costs**
- **Energy Efficient Mortgages (eems) are available to allow people to borrow more money for a Comfort Plus Home**



Comfort Plus Homes™

What'S an EEM?

- **An Energy Efficient Mortgage (EEM) allows the lender to stretch the debt-to-income ratio 1-2%, allowing the borrower to borrow more money to cover the additional costs of a Comfort Plus Home**
- **The lower energy costs offset this additional mortgage payment**
- **Check out this example . . .**



Comfort Plus Homes™

EEM Example

Typical Home	Component	Energy Eff Home
\$100,000	Home Price	\$105,000
\$10,000	Downpayment	\$10,500
\$90,000	Mortgage Amount	\$94,500
8%	Interest Rate	8%
30	Term (Years)	30
\$660	Monthly Payment	\$693
\$844	PITI	\$877
\$109	Monthly Energy Bills	\$72
\$953	Total Monthly Housing	\$949
\$3,013	Monthly Income Required	\$2,922
\$36,159	Annual Income Required	\$35,070



Who Benefits When a Comfort Plus Home Is Built?

- **State/Region/Nation/Earth**
- **Utility Company**
- **Building Material Supplier**
- **Builder**
- **Real Estate Agent**
- **Lending Institution**
- **Homeowner/Buyer**



Comfort Plus Homes™

Comfort Plus Home Keys

- **Airtight Construction**
- **Adequate and Properly Installed Insulation**
- **Properly Selected and Installed Heating, Air Conditioning & Water Heating Systems**
- **Controlled Ventilation**
- **Proper Commissioning**

Site Selection

**There goes the
neighborhood**



Comfort Plus Homes™

Key Points - Site Selection

- If you have a choice, select a south sloping site where the back of the home faces south
- Select a site that is sheltered from NW winter winds and open to S/SW summer breezes
- Select a site that has trees that will shade the east and west sides of the home
- . . . Nice, but not always possible!
- Doesn't have to be . . .



House Layout

It does make a difference. . .



Comfort Plus Homes™

Key Points - House Layout

- **Any architectural style is suitable**
- **Minimize corners to increase efficiency**
- **Locate the most actively used areas (family room and kitchen/eating area) on south to benefit from daylighting and solar heat in winter**
- **Locate bathrooms, laundry, closets and mechanical rooms which don't need large windows on the north wall to act as a buffer**
- **Locate the garage on the NW corner of the house to buffer against the winter winds**
- **Locate baths close to kitchens and laundry areas to minimize plumbing runs**



Comfort Plus Homes™

Key Points - House Layout

- **Concentrate windows on the south to capture solar gains in the winter**
- **Minimize east and west windows to lower cooling costs**
- **Use light colored walls, floors, and ceilings to maximize the daylighting effect**
- **Locate fireplaces on interior walls, not exterior**

Building Envelope

**Foundations, Floors, Walls,
Windows, Doors, Ceiling/Roofs,
and Insulation**

Foundations/Floors

**Build it right from the
bottom up**



Comfort Plus Homes™

Key Points - Foundations

- **Design for concrete cracks**
- **Design for water management**
- **Design to prevent frost damage**
- **Design to control moisture vapor**
- **Design to limit soil gas penetration**



Key Points - Foundation Cracks

- **Concrete cracks**
- **Concrete has always cracked**
- **Concrete will always crack**
- **Reinforcing concrete will not keep it from cracking**
- **It is not possible to build a crack-free concrete slab or foundation wall**
- **However, it is possible to control where the concrete cracks . . .**



Comfort Plus Homes™

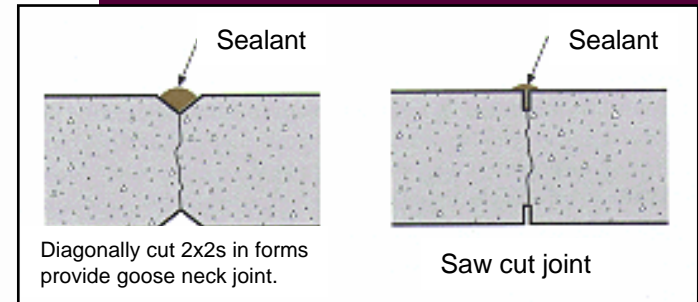
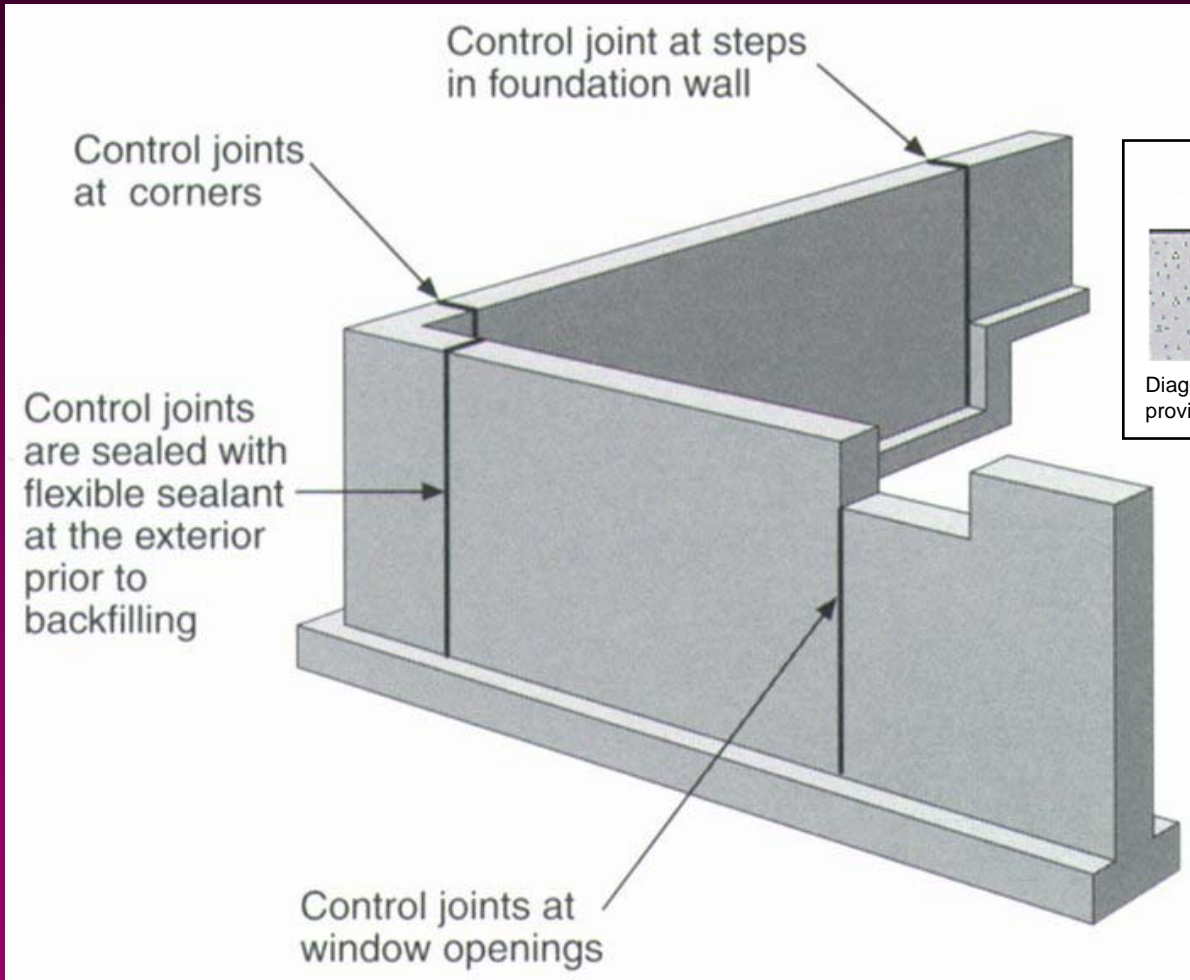
Control Joints

- **Cracks are bad . . . Control joints are good**
- **Install control joints at:**
 - **Corners**
 - **Window openings**
 - **Steps in the foundation**
- **Control joints can be sawed or created with diagonally cut 2x2s**
- **Seal control joints with flexible sealant at the exterior prior to backfilling**



Comfort Plus Homes™

Control Joints





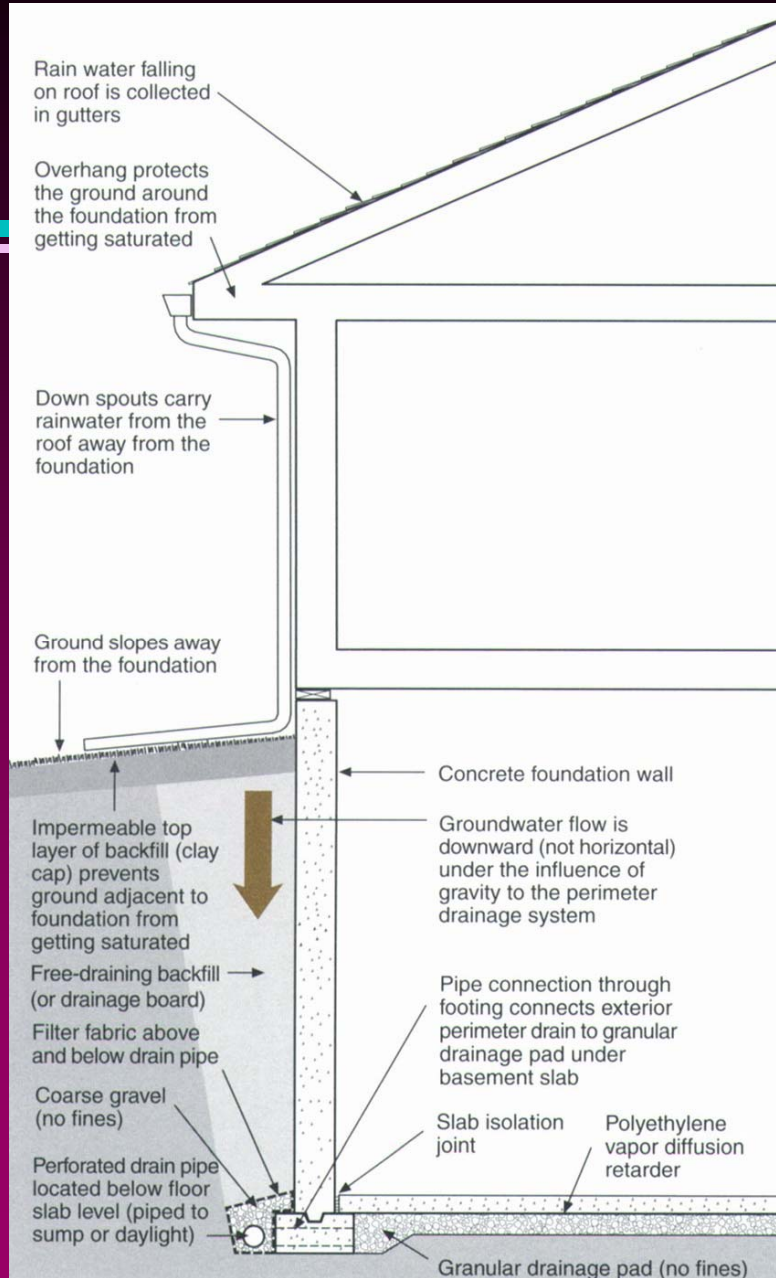
Key Points - Water Managed Foundations

- **Install granular drainage pad (no fines) under slab**
- **Install perimeter tile around foundation below slab level, connect to sub slab drainage pad and drain to sump or daylight**
- **Cover perimeter tile above and below with coarse gravel (no fines) and a filter cloth**
- **Install free-draining backfill or drainage board against dampproofed foundation wall**
- **Install impermeable clay cap around foundation**
- **Slope grade away from foundation**
- **Design overhangs to keep ground around foundation from getting saturated**
- **Install gutters to collect rainwater and downspouts to route water away from foundation**



Comfort Plus Homes™

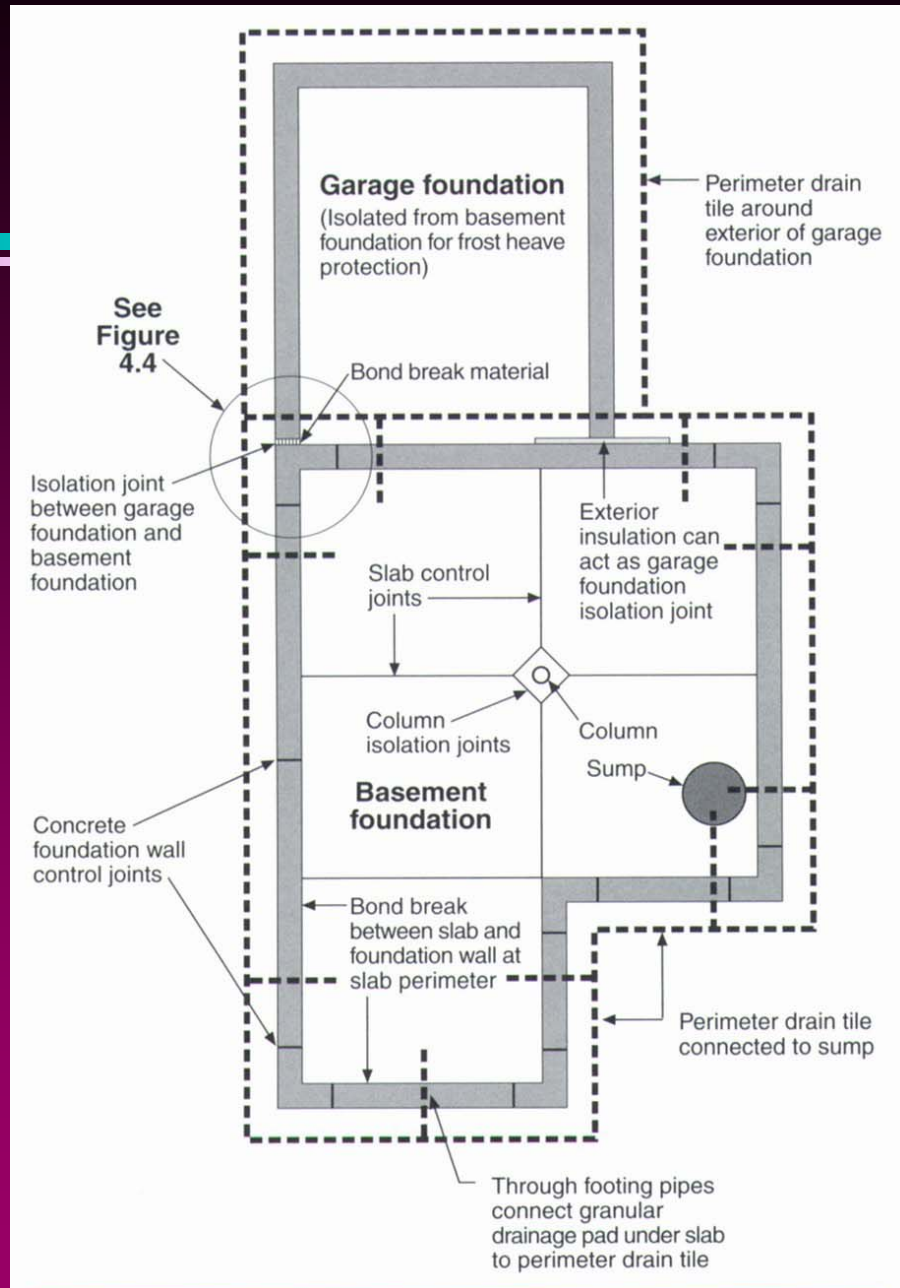
Water Managed Foundation





Comfort Plus Homes™

Sub Slab Drainage





Comfort Plus Homes™

Key Points - Frost Movement

- **The key to frost management is the same as water management . . .**
- **Keep water away from the foundation**
- **Garages are most susceptible because they are not heated**
- **Make sure garage foundation can move in a manner that won't destroy the house foundation**



Key Points - Controlling Moisture Vapor

- **Dampproof top of footing to stop ground water capillary action**
- **Dampproof the foundation wall exterior**
- **Install coarse gravel (no fines) drainage pad under slab**
- **Install either a polyethylene vapor diffusion retarder or high density expanded polystyrene under slab**
- **Do not install sand over a layer of polyethylene**



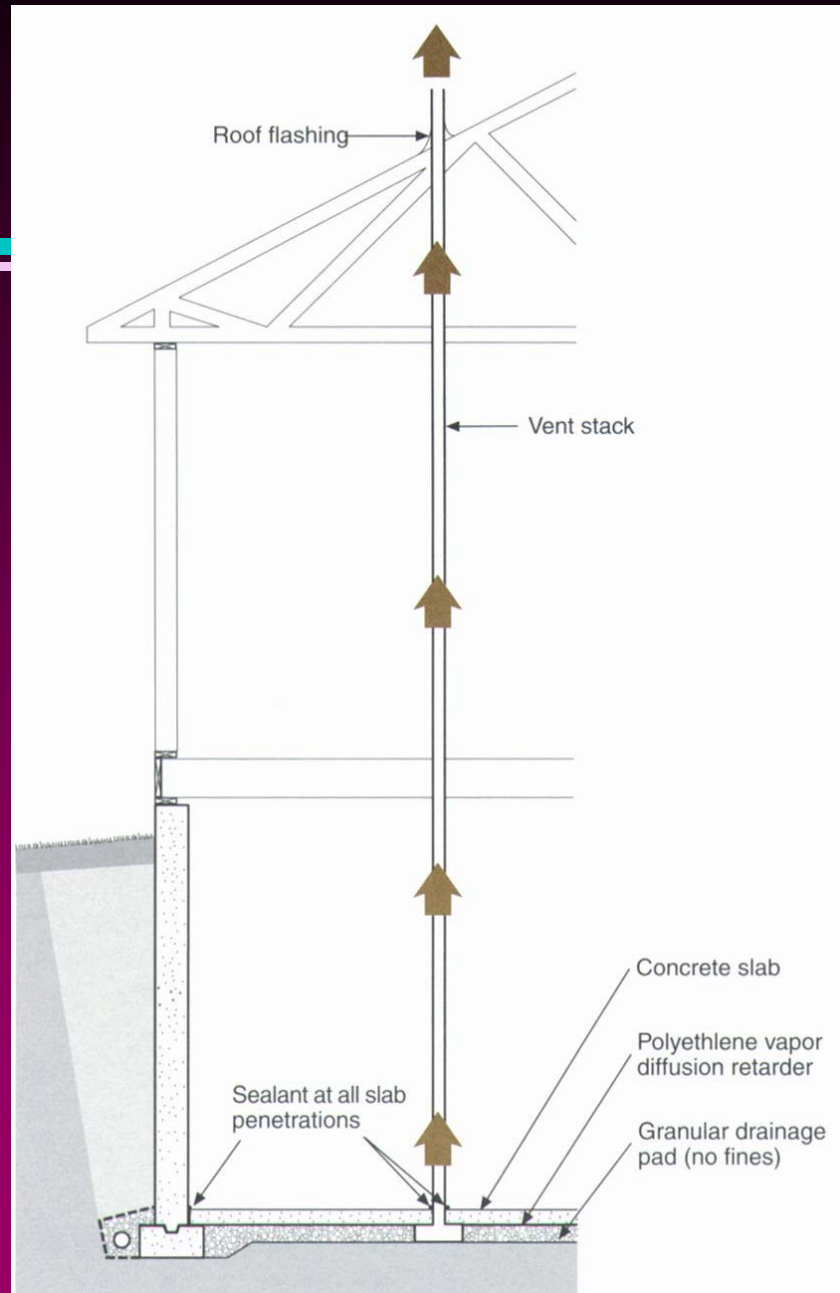
Key Points - Controlling Soil Gas

- **Radon, herbicides, termiticides, etc.**
- **Soil gas moves through holes due to a pressure difference and since we can't eliminate holes, we must address the pressure differences**
- **Solution: Install a passive sub slab ventilation system at time of construction**
- **A fan can be added later, if needed**
- **Also, seal all joints in concrete floor**
- **Seal the sump pump hole**



Comfort Plus Homes™

Soil Gas Ventilation System



Foundation and Floor Details



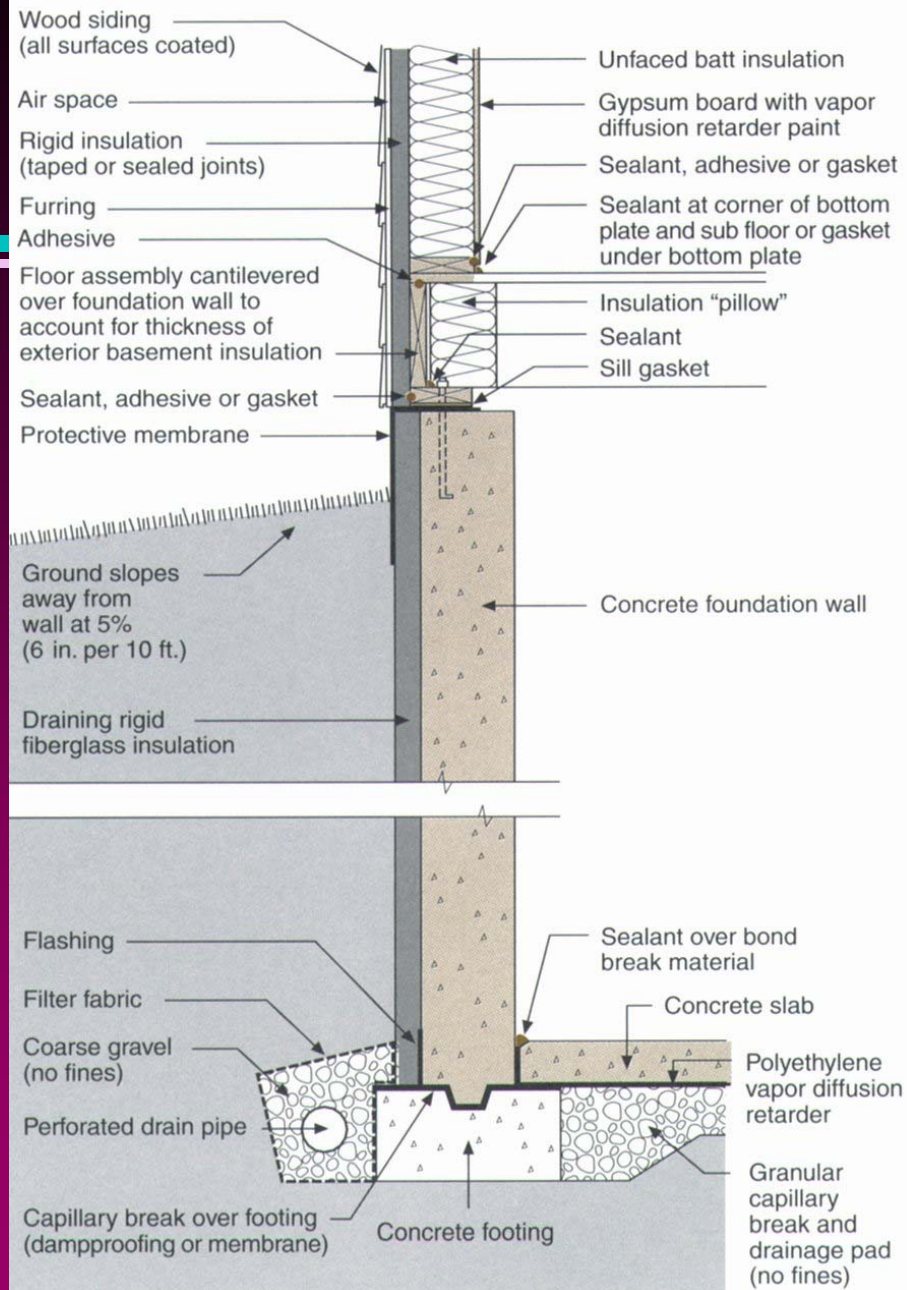
Key Points - Basements

- **Install subslab drainage pad connected to exterior perimeter tile**
- **Pour slab over polyethylene vapor diffusion retarder or high density expanded polystyrene**
- **Dampproof top of footing and foundation exterior**
- **Install control joints in slab and foundation wall**
- **Seal slab joint at foundation wall**
- **Seal around other slab penetrations**
- **Install exterior or interior insulation**
- **Slope grade away from foundation**



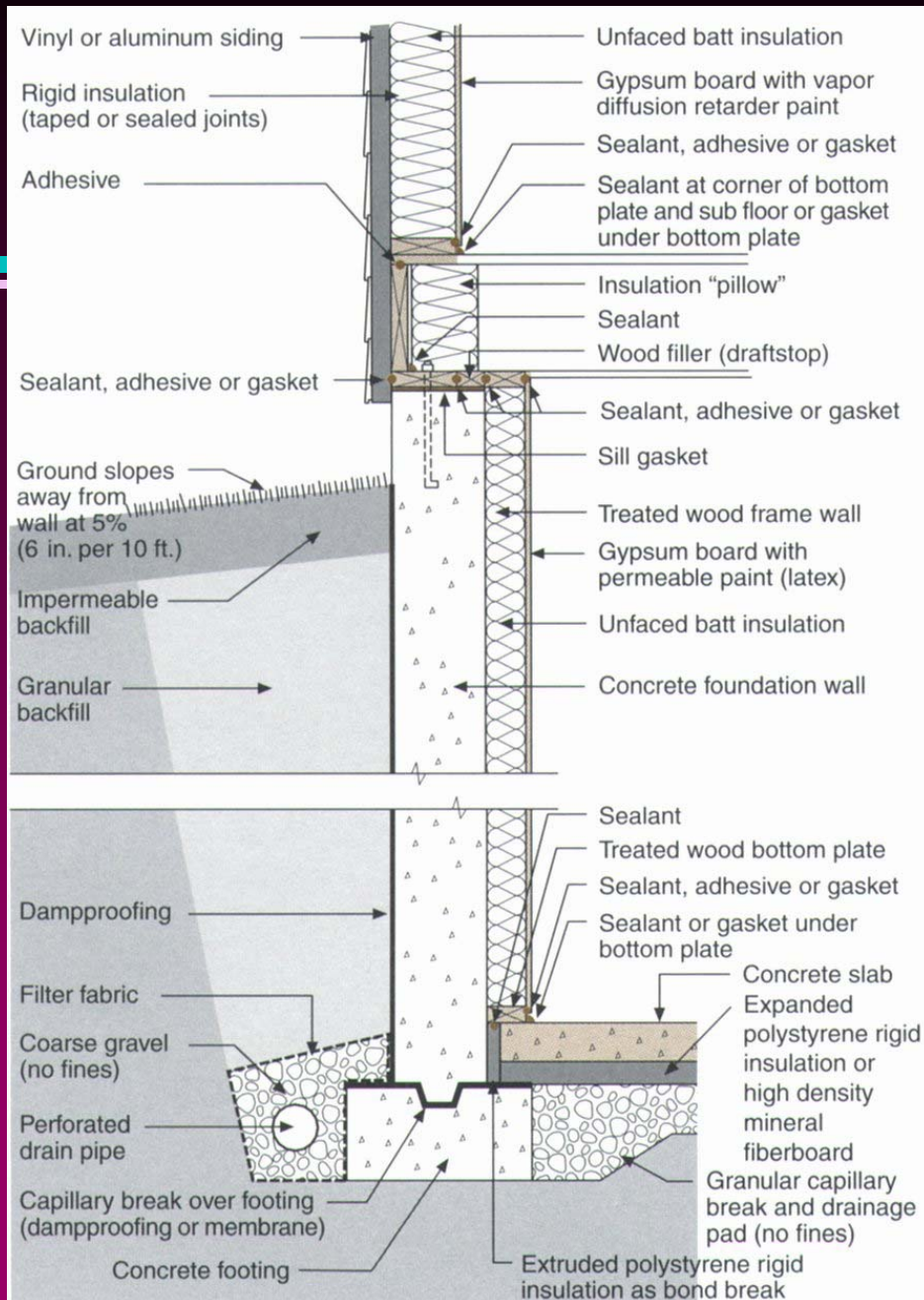
Comfort Plus Homes™

Basement - Exterior Insulation





Basement - Interior Insulation



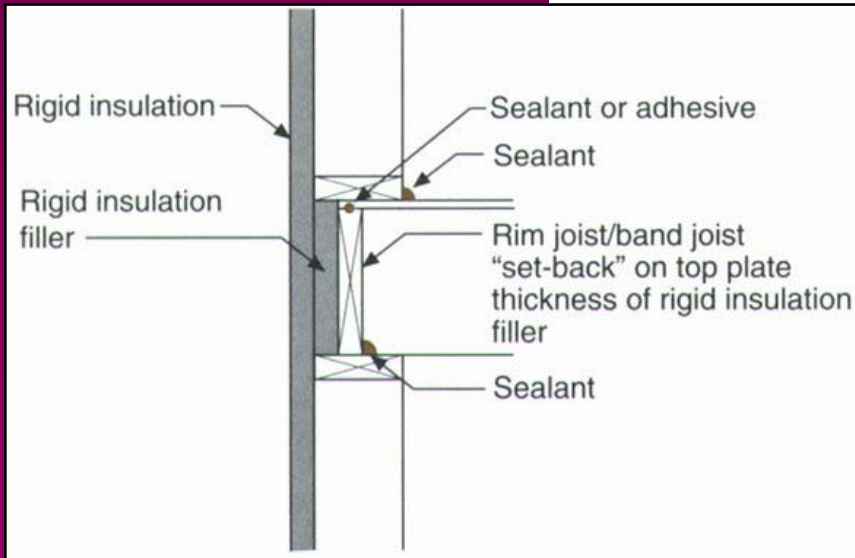
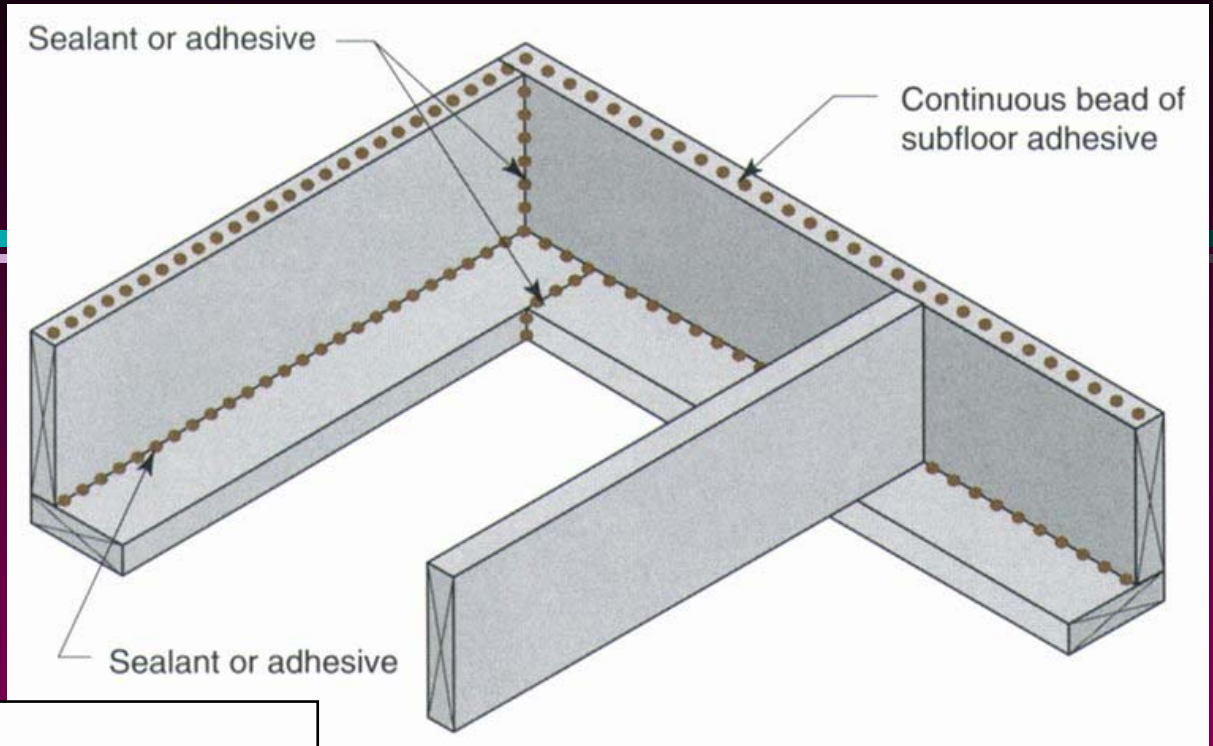


Key Points - Rim Joist Area

- **Install adequate sill sealer below sill plate and/or foam seal that joint**
- **Set rim joist back 1 1/2" to allow for extra exterior rigid insulation**
- **Use caulk or gasket at bottom of rim joist**
- **Use construction adhesive to seal flooring to rim joist**
- **Use caulk or gasket to seal wall plate to floor**



Rim Joist Details





Comfort Plus Homes™

Key Points - Crawl Spaces

- **Vented crawl spaces are a bad idea**
- **Ventilating a crawl space with exterior, humid air during the summer leads to condensation and wetting of cool crawl space assemblies**
- **Construct crawl spaces like mini basements that are heated in the winter and cooled in the summer**



Comfort Plus Homes™

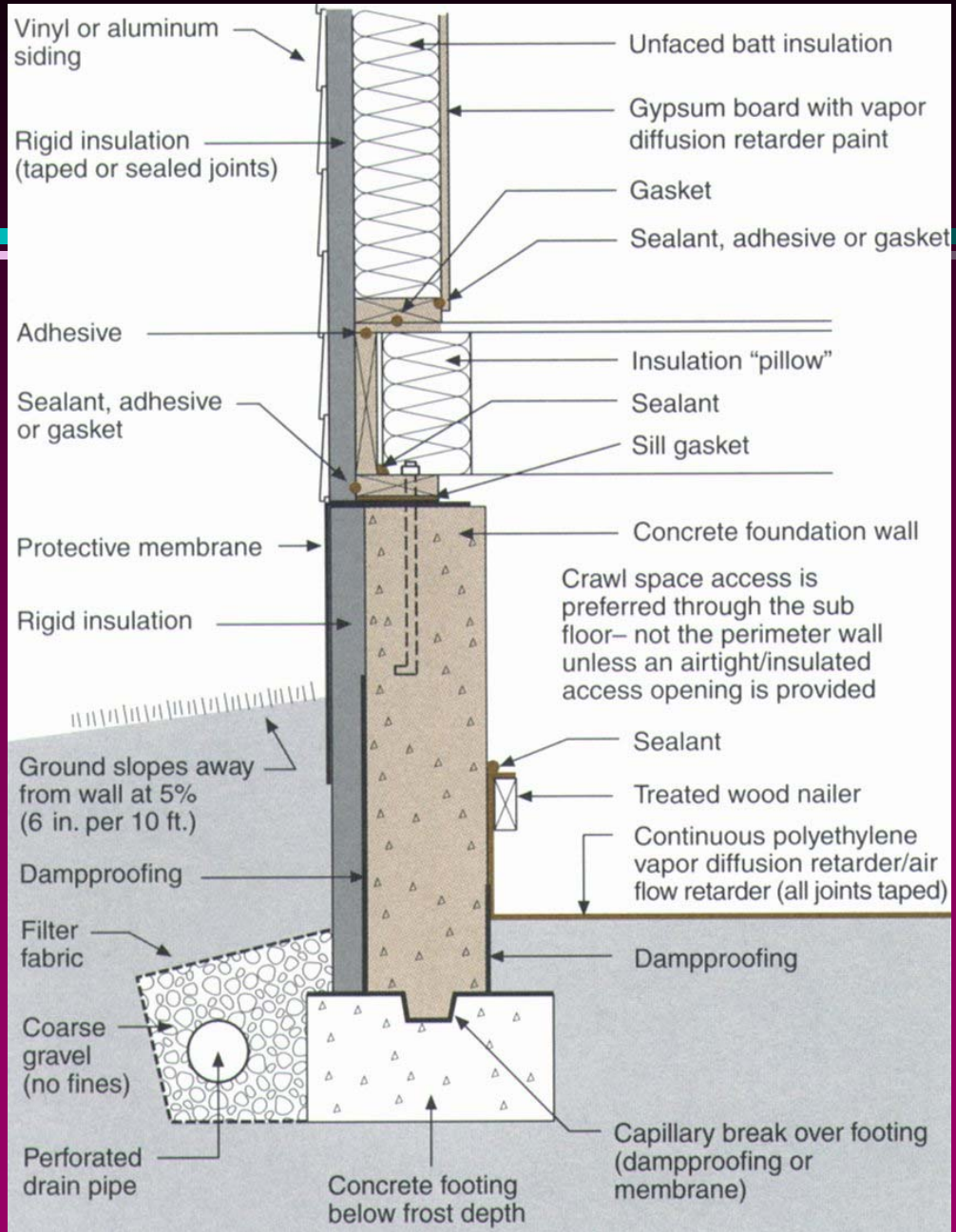
Key Points - Crawl Spaces

- **Dampproof top of footing and exterior of foundation wall**
- **Insulate the exterior or interior of the crawl space wall**
- **Install a continuous polyethylene vapor diffusion retarder on floor of crawl space that is sealed to the foundation walls and internal supports**



Comfort Plus Homes™

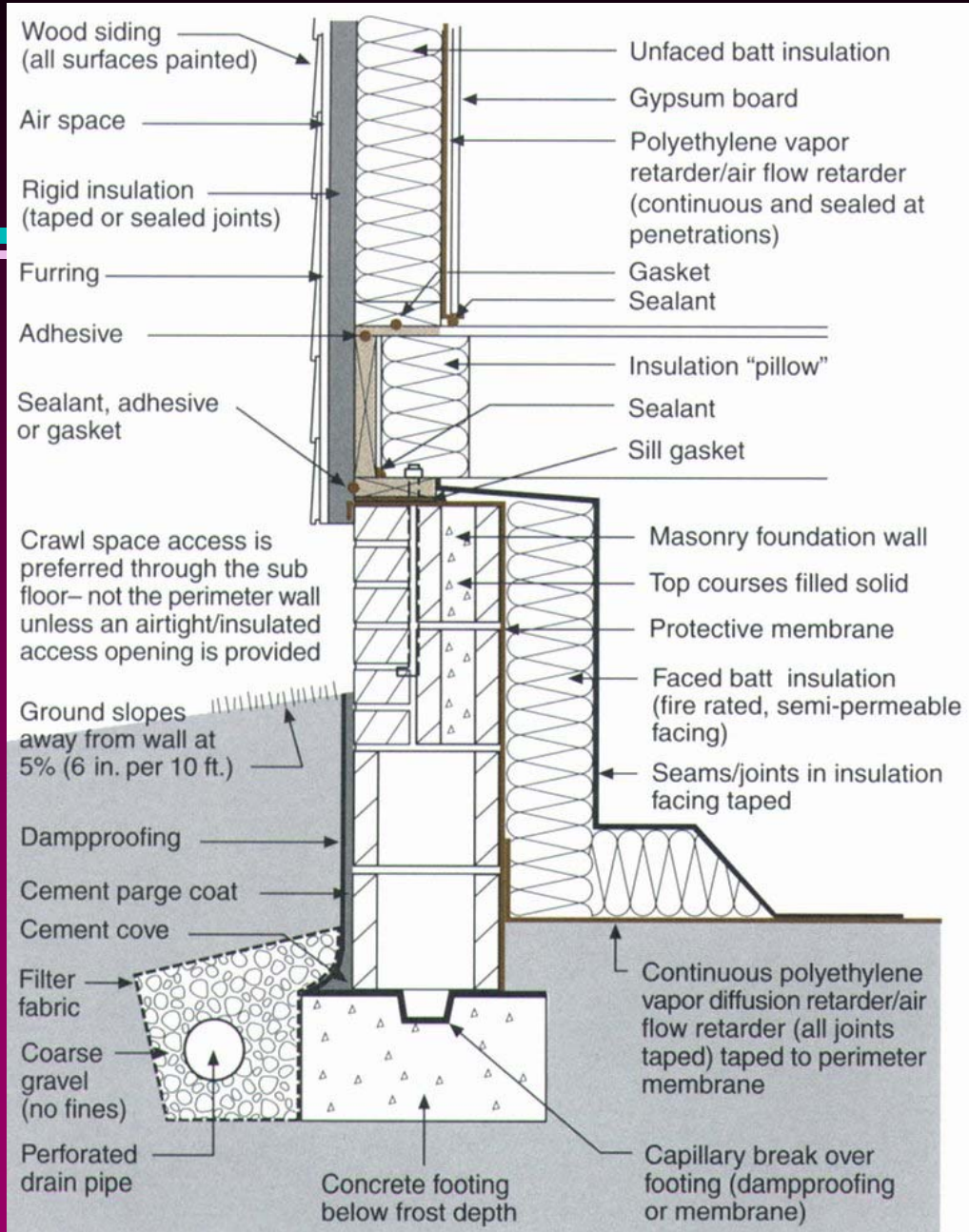
Crawl Space Exterior Insulation





Comfort Plus Homes™

Crawl Space Interior Insulation





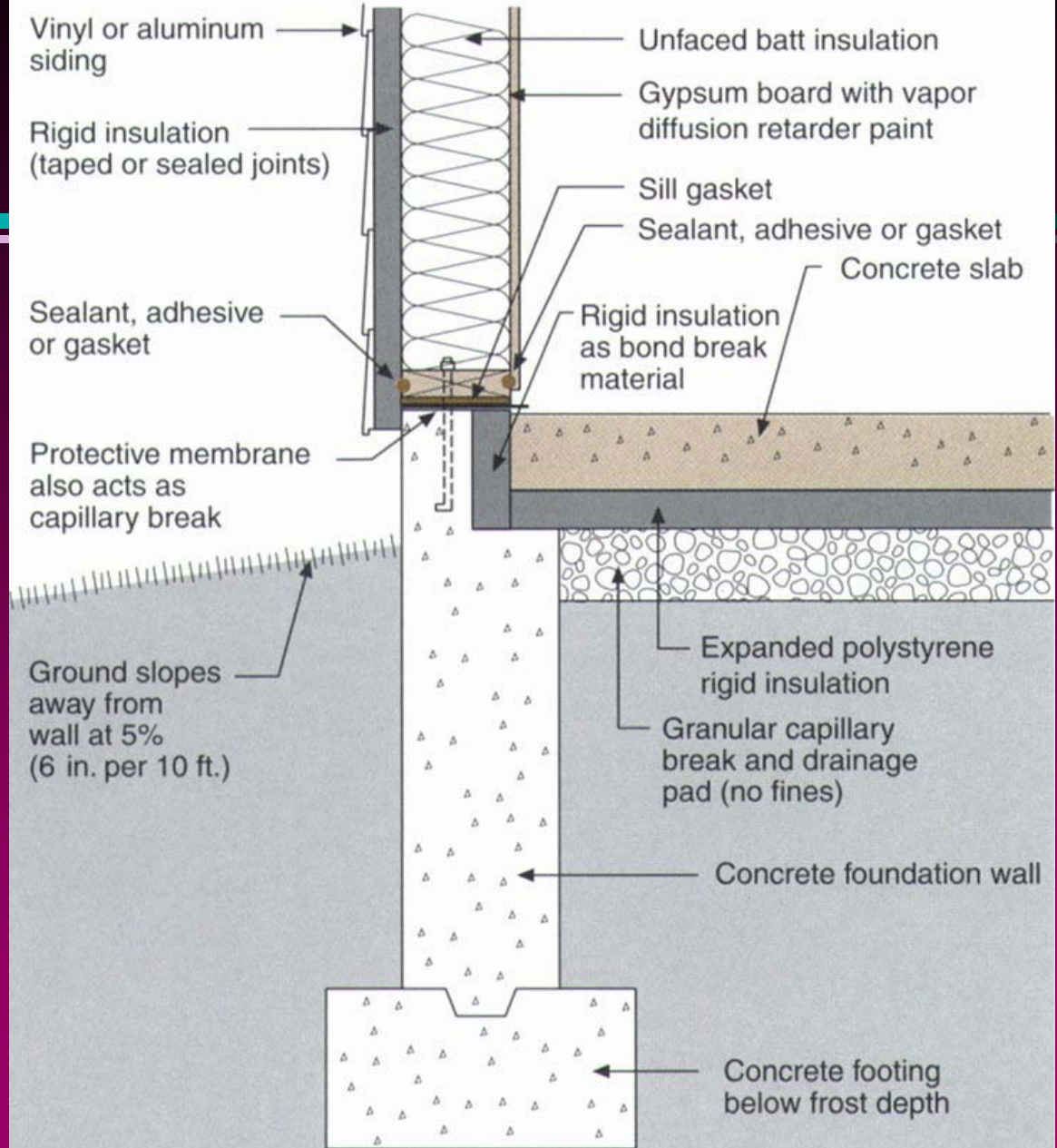
Key Points - Slabs-on-Grade

- **Isolate perimeter of slab with exterior or interior insulation**
- **Install granular drainage pad under slab**
- **Install high density expanded polystyrene under entire slab**
- **If you want to install carpet on the slab, it must be insulated or it could lead to serious health problems**



Comfort Plus Homes™

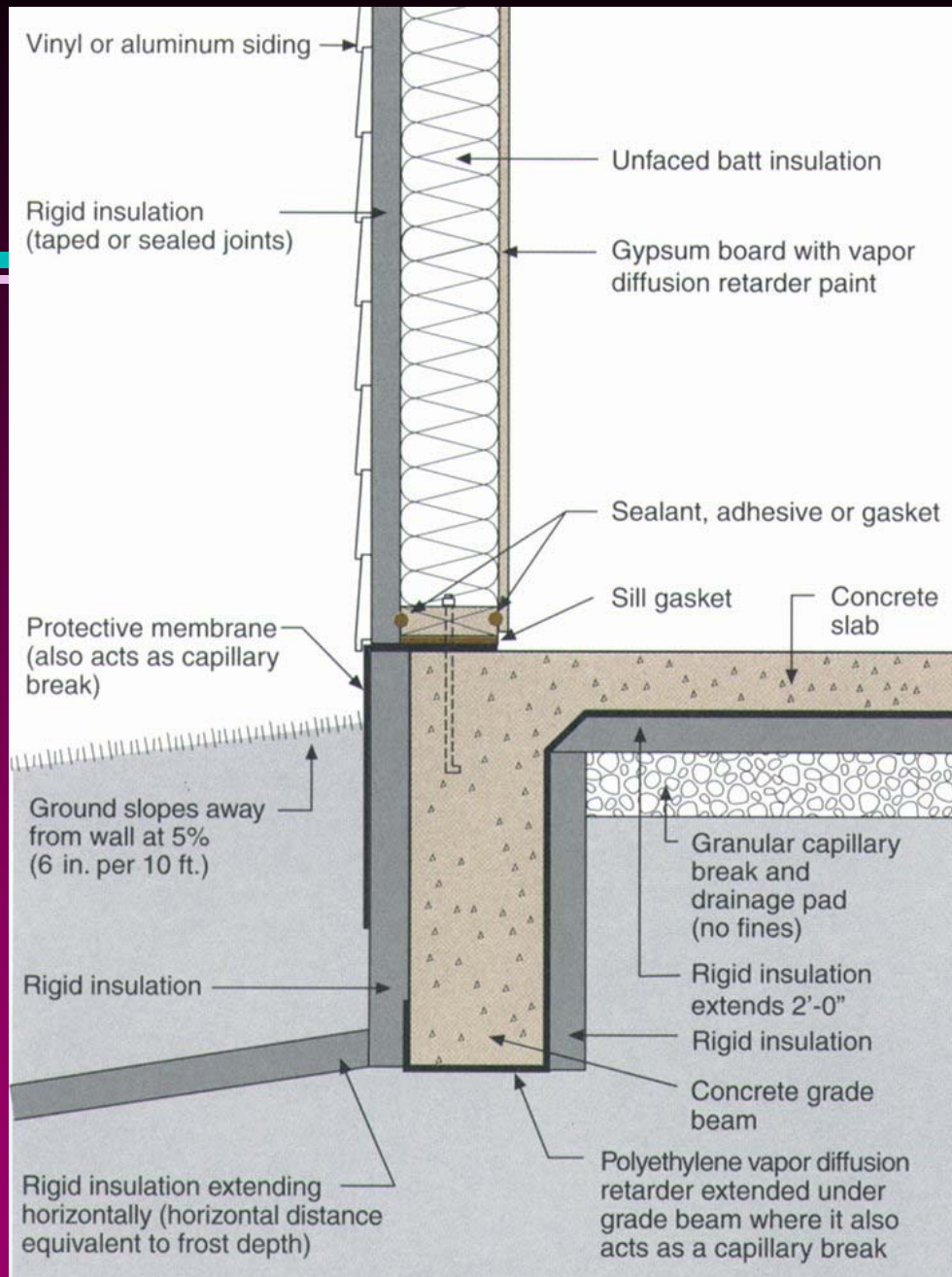
Slab Detail





Comfort Plus Homes™

Frost-Free Shallow Foundation





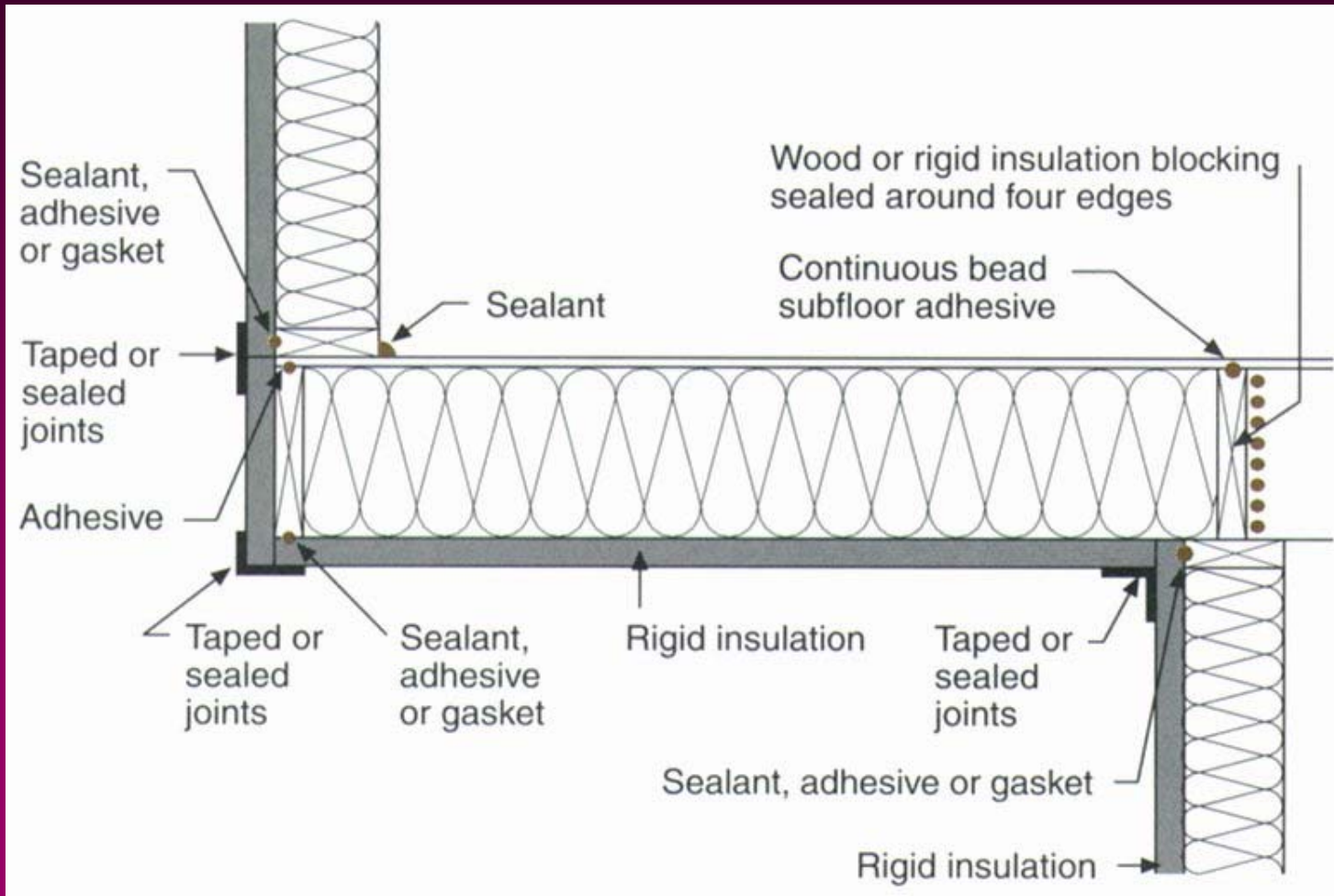
Comfort Plus Homes™

Key Points - Floors Over Unheated Spaces

- **Treat like wall turned on side**
- **Seal all joints at rim joist and between heated and unheated spaces**
- **Insulate floor cavity and install rigid insulated sheathing on cold side**



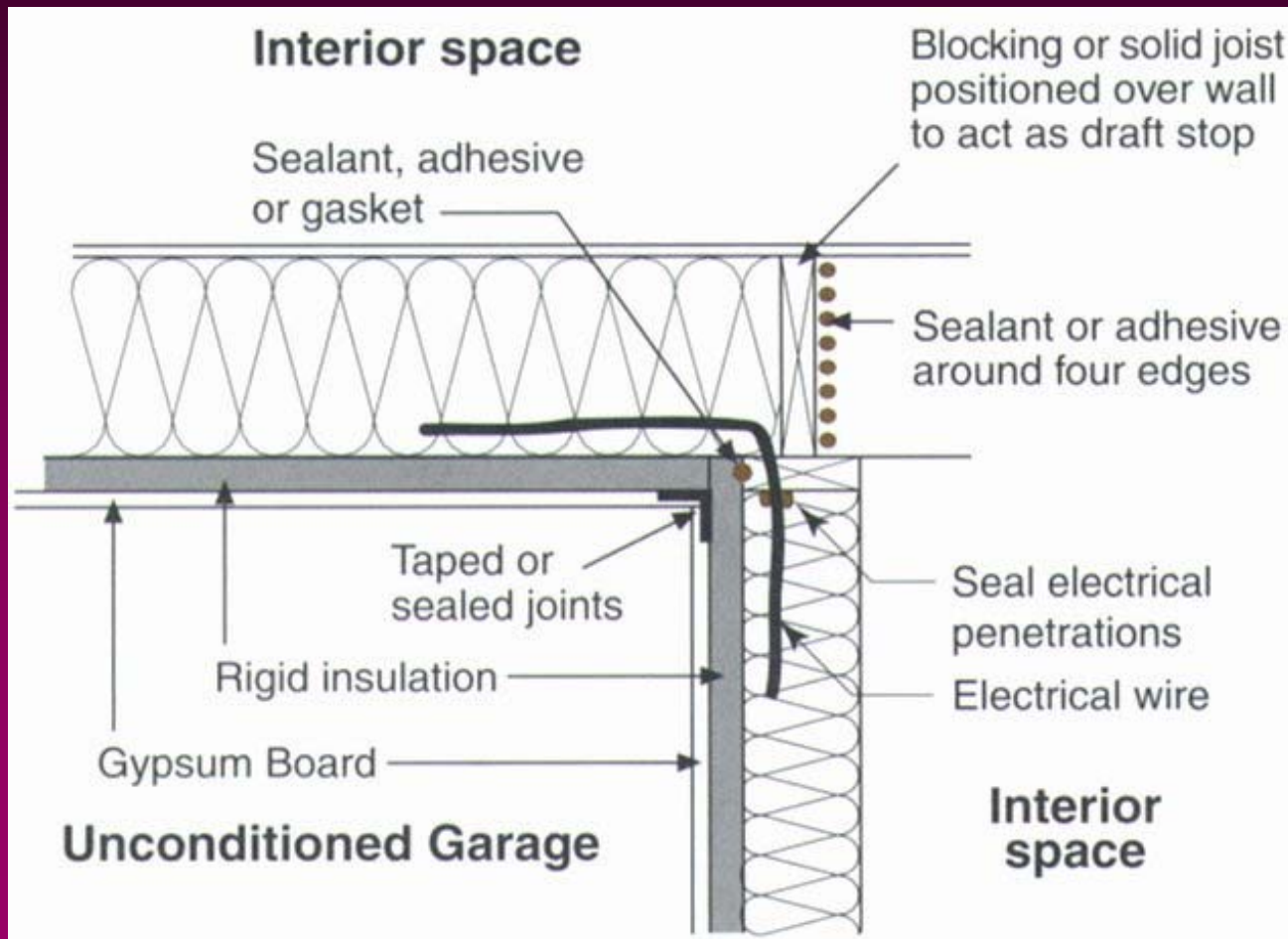
Cantilevered Floor Detail





Comfort Plus Homes™

Floor Over Garage Detail



Walls

**Build Them Right...Solve
Many Callbacks**



Comfort Plus Homes™

Key Points - Walls

- **Minimize unnecessary use of structure**



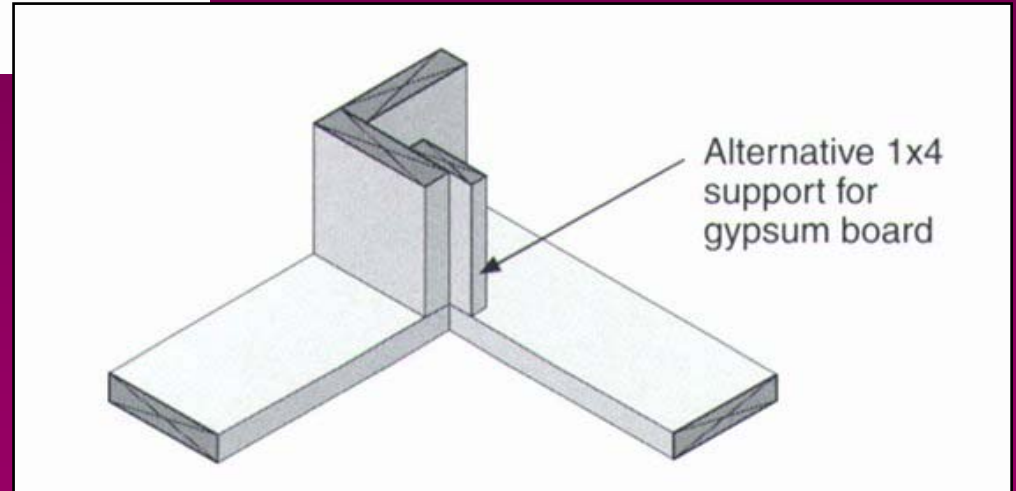
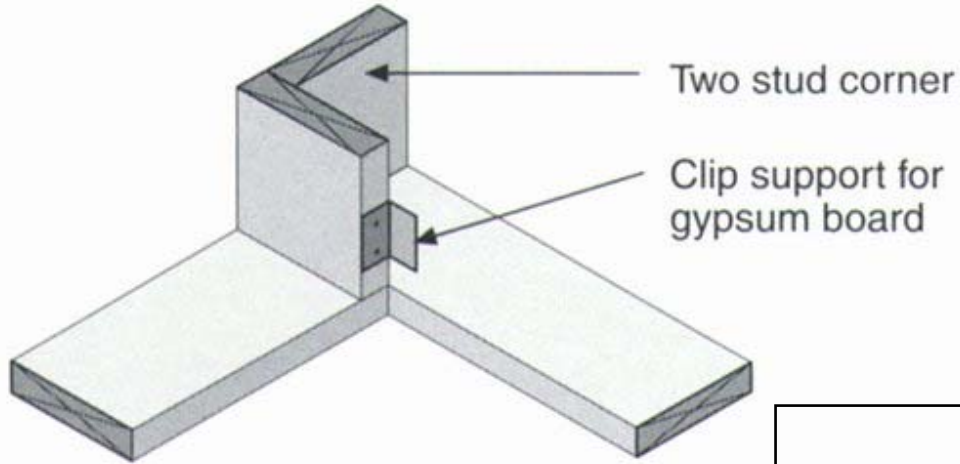
We Use Too Much Wood . . .

- **Three stud corners**
- **Three stud interior/exterior wall connections**
- **Headers in non-load bearing walls**
- **Double top plates, because we haven't learned to line up roof framing with wall and floor framing**
- **Studs at 16" o.c. instead of 24"**



Comfort Plus Homes™

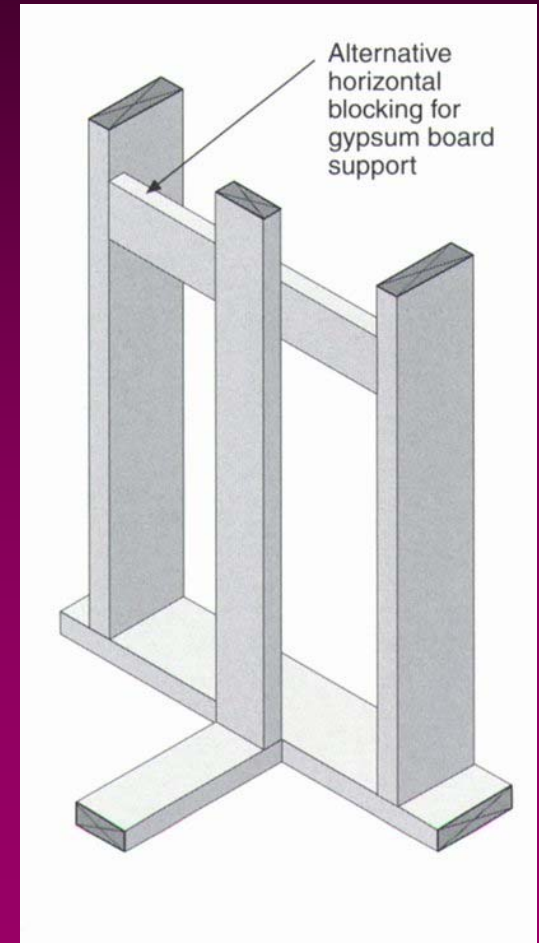
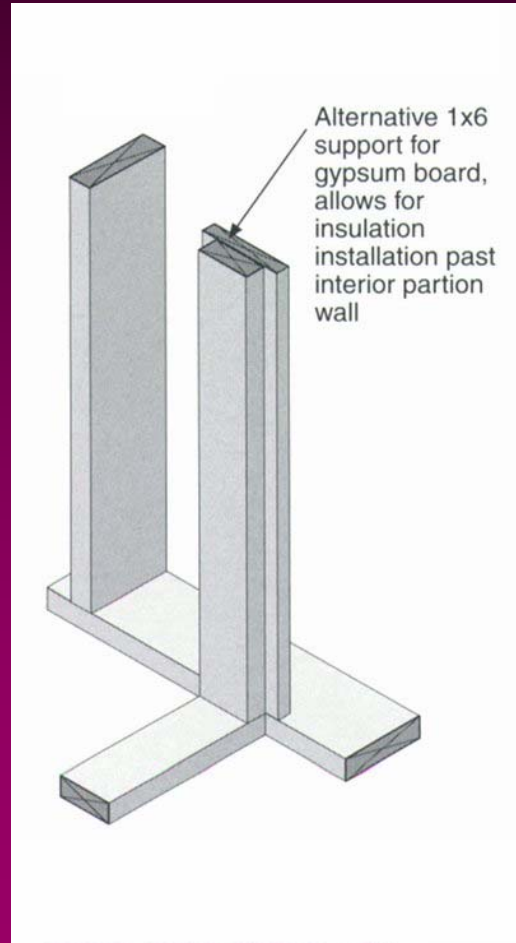
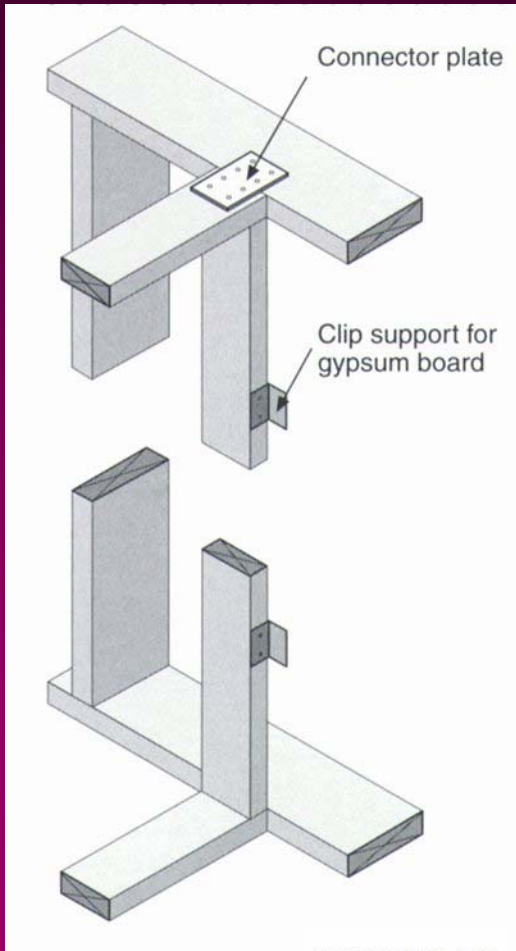
Alternative Corners





Comfort Plus Homes™

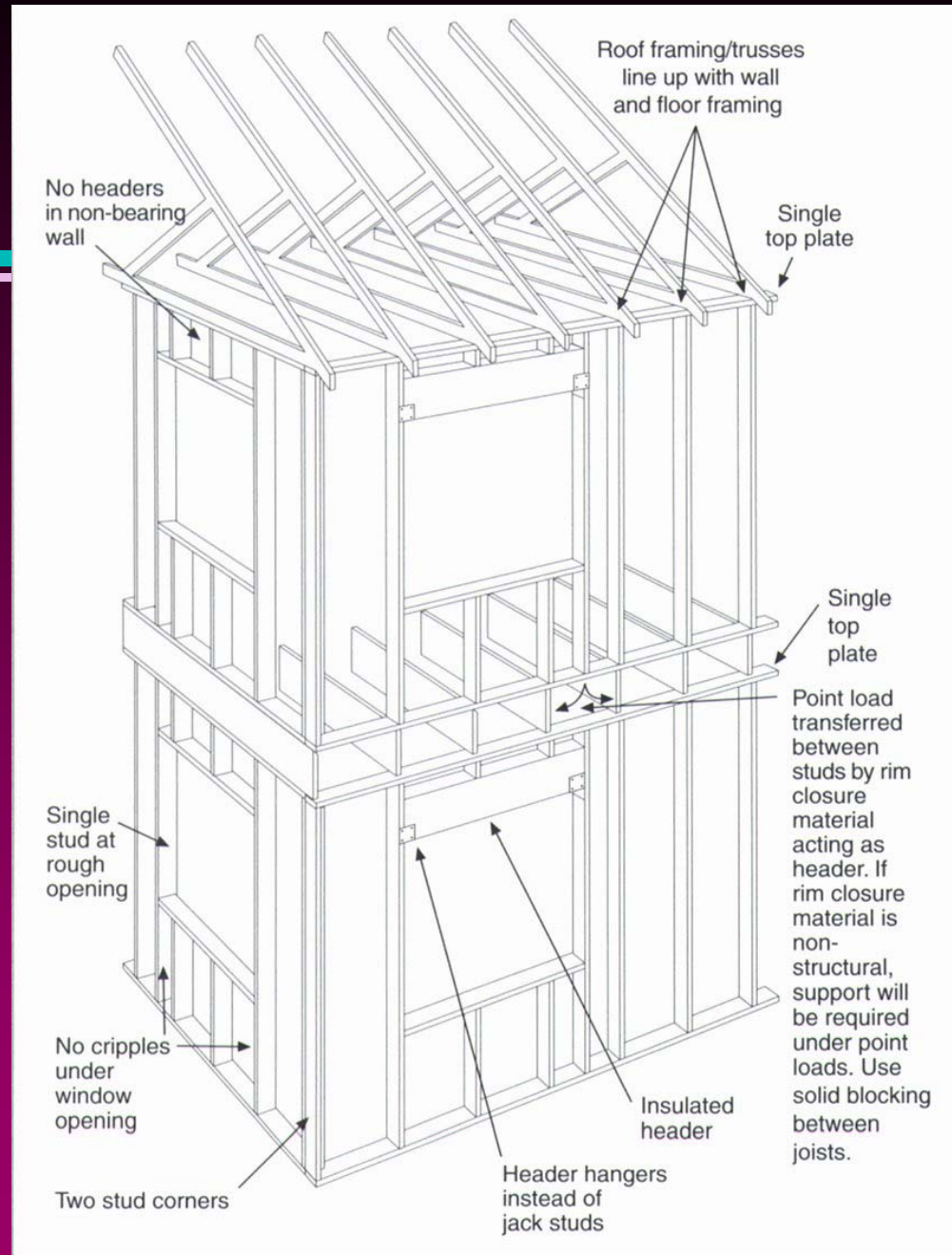
Alternative Interior Wall at Exterior Wall Connection





Comfort Plus Homes™

Stack Framing Detail





Comfort Plus Homes™

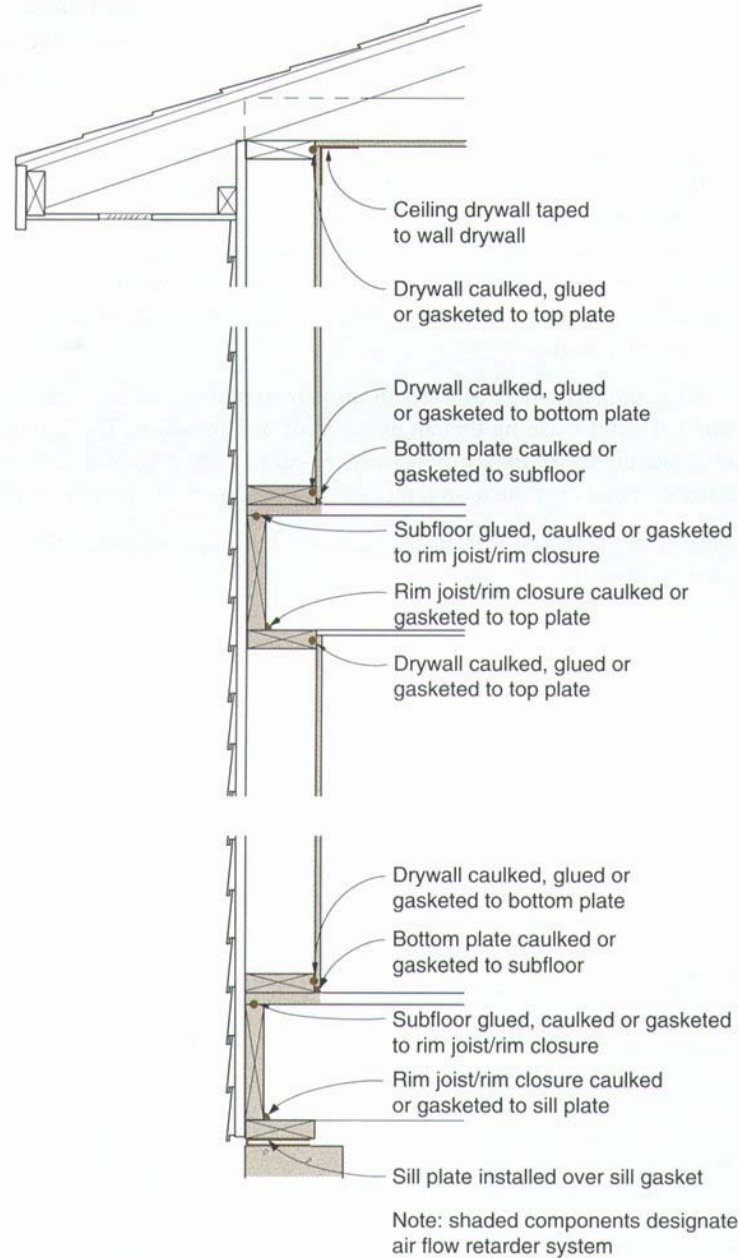
Key Points - Walls

- **Minimize unnecessary use of structure**
- **Seal joint where wall plate sits on floor**
- **Use some type of vapor diffusion retarder**
- **Insure that interior surface is as airtight as possible -- especially electric boxes**
- **Install a minimum of 1" rigid insulation as exterior sheathing and tape seams**
- **Coat all six sides of wood siding and install it over spacers to promote drainage and drying**



Comfort Plus Homes™

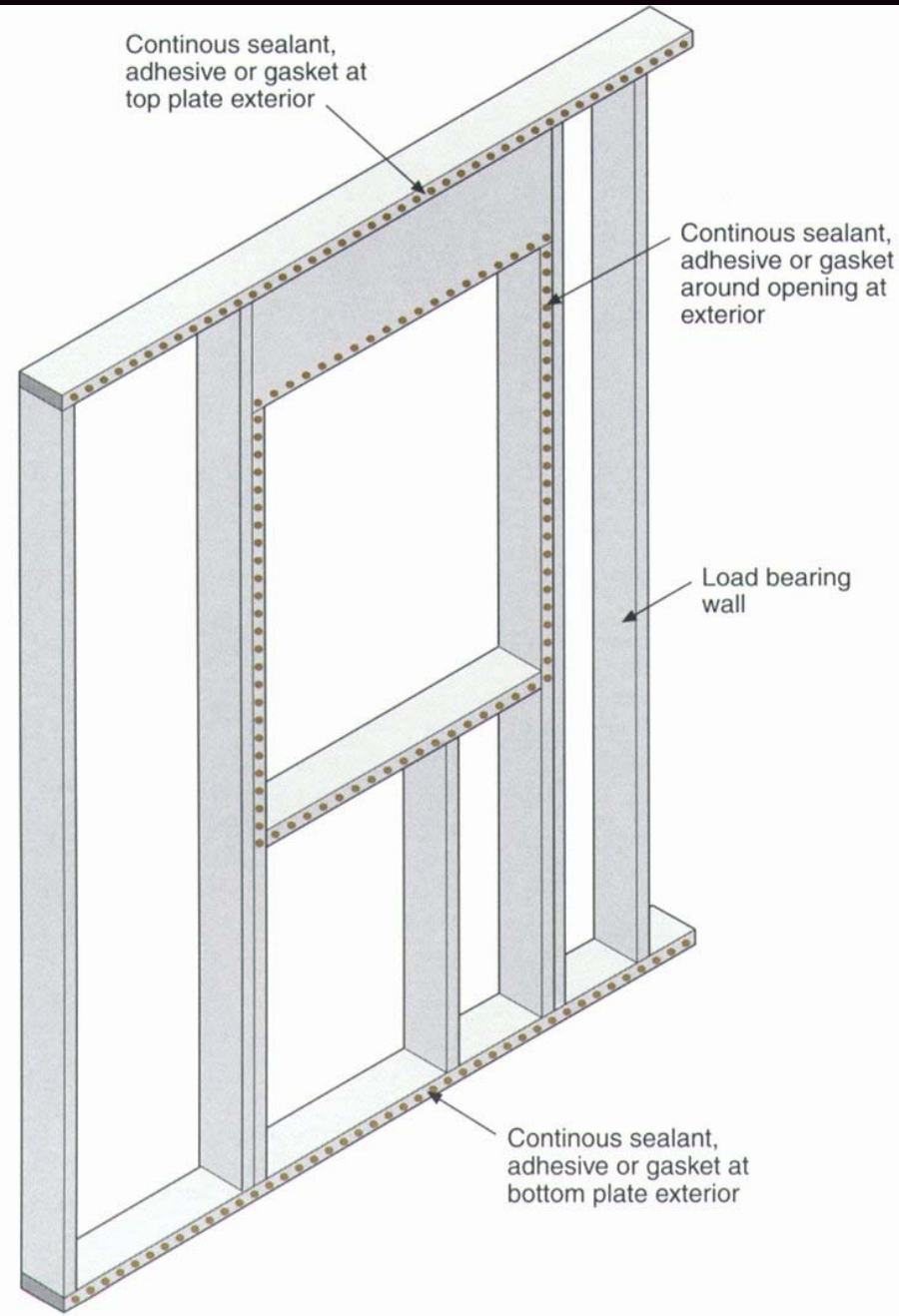
Wall Detail





Comfort Plus Homes™

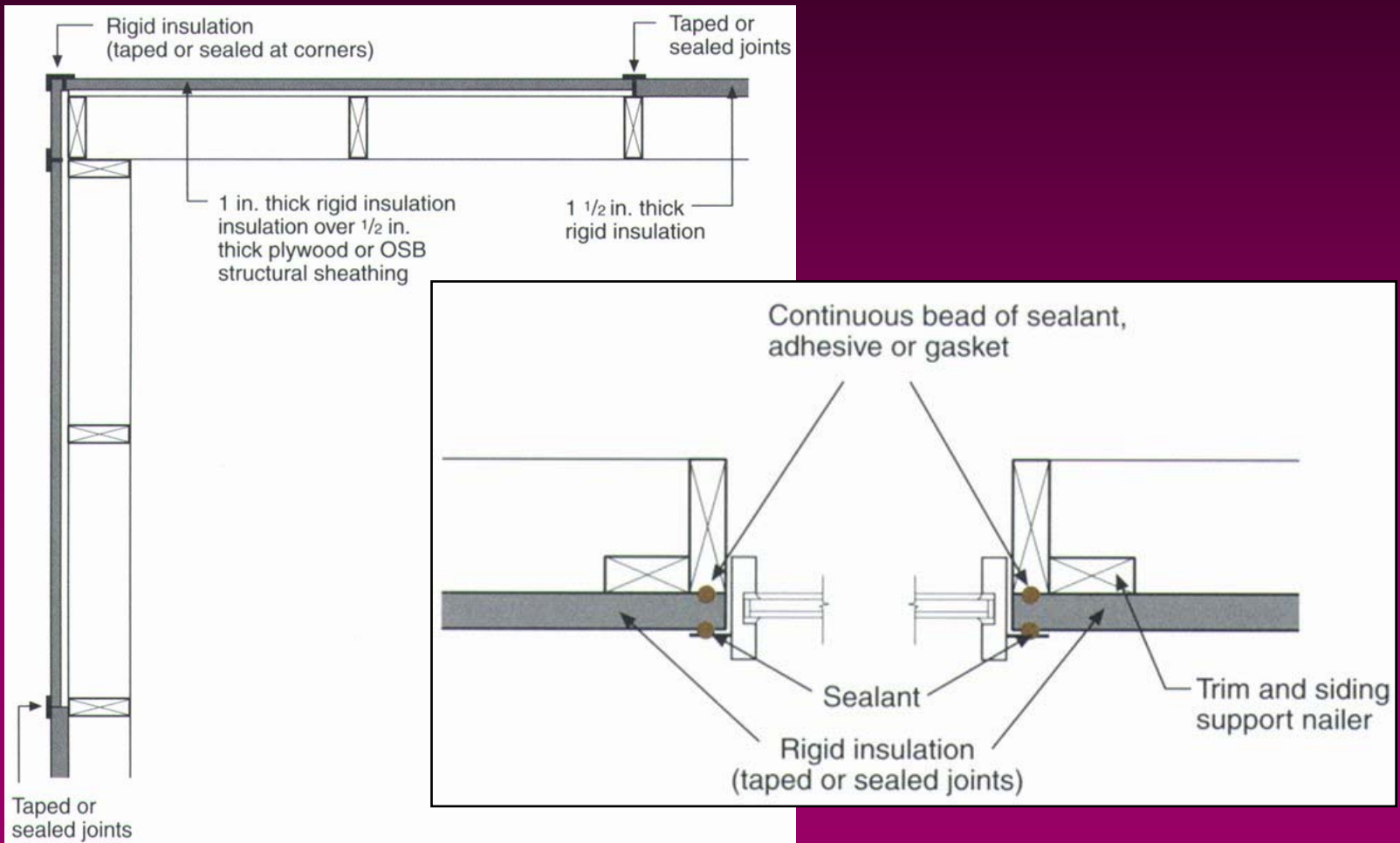
Sealing Rigid Insulation





Comfort Plus Homes™

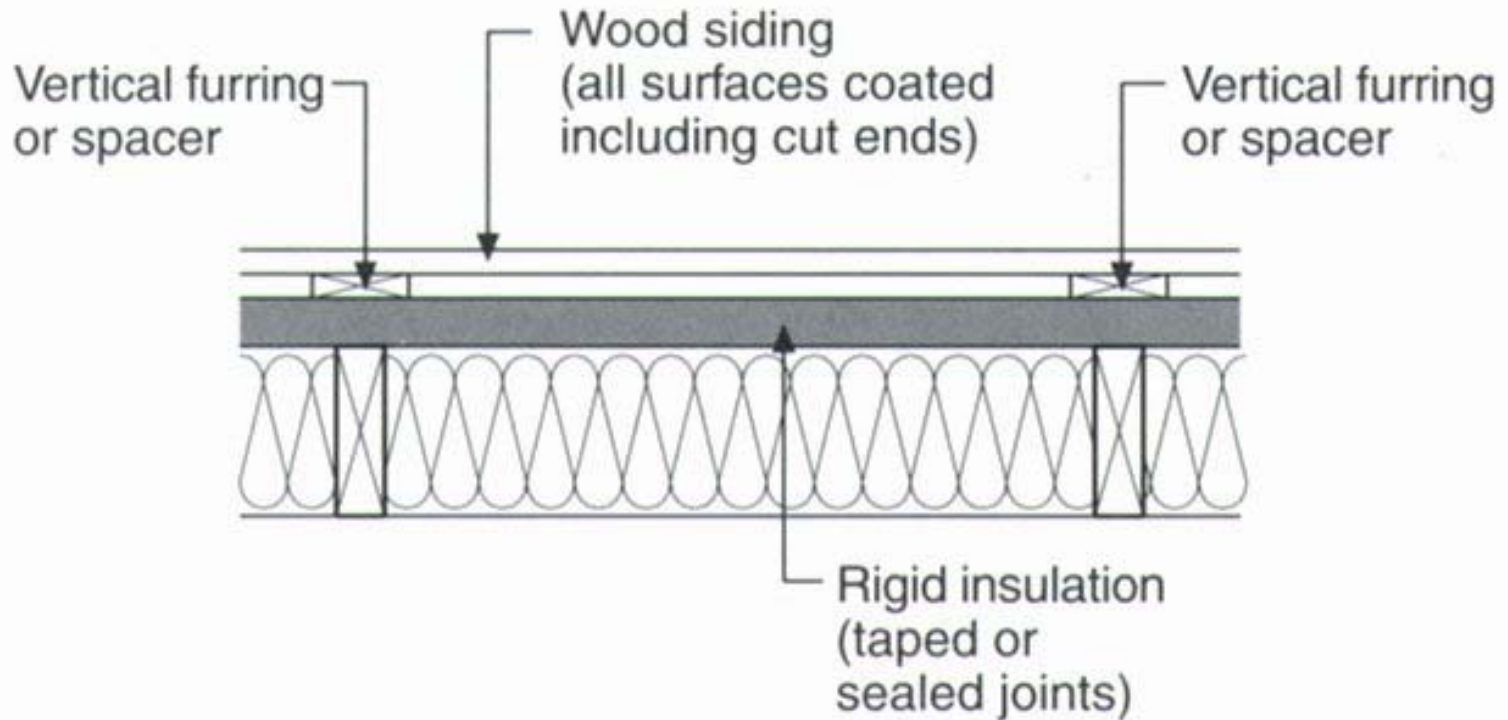
Rigid Insulation





Comfort Plus Homes™

Wood Siding Installation



Windows & Doors

**Let the sunshine in...and
your neighbors**



Comfort Plus Homes™

Windows

- **Casement/Awning windows are naturally tighter than double hung or sliders**
- **Avoid aluminum windows unless they have an adequate thermal break**
- **Use a minimum of double-glazed low-E**
- **Window placement: 40% on south, 30% on East, 20% on west, 10% on north**
- **100 Square feet of west glass will require an additional ton of air conditioning**
- **Provide adequate overhangs for south windows**



Comfort Plus Homes™

Doors

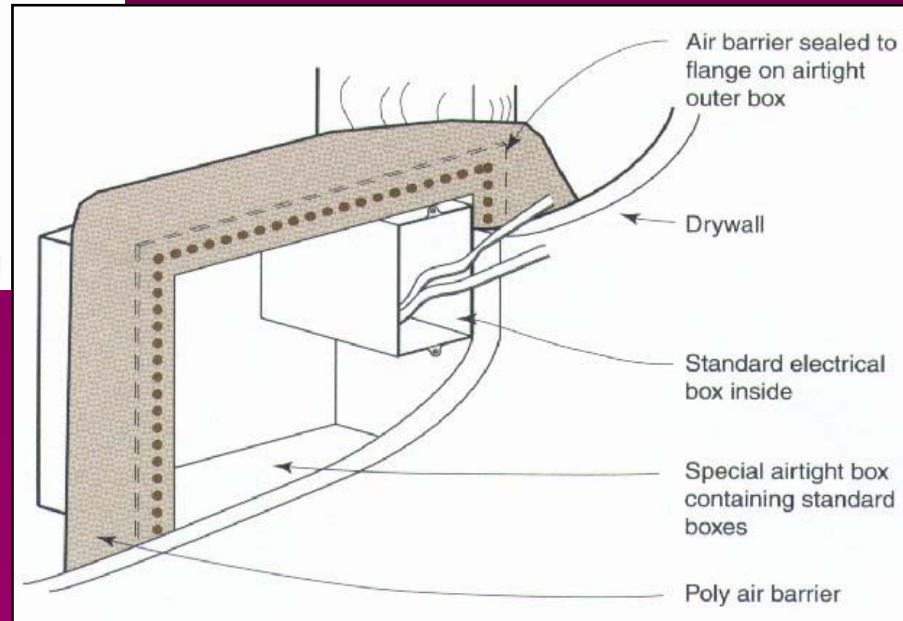
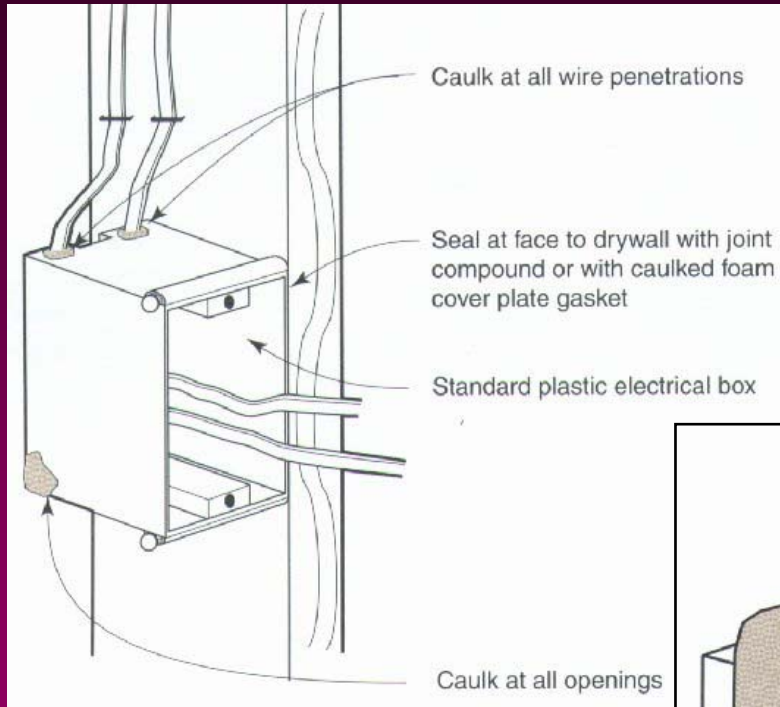
- **Install a high R-value door. Doors with R-15 are available**
- **Install French doors as instead of sliding glass doors because they seal tighter**
- **Vestibule entries are not cost-effective for our climate**

Handling Wall Penetrations



Comfort Plus Homes™

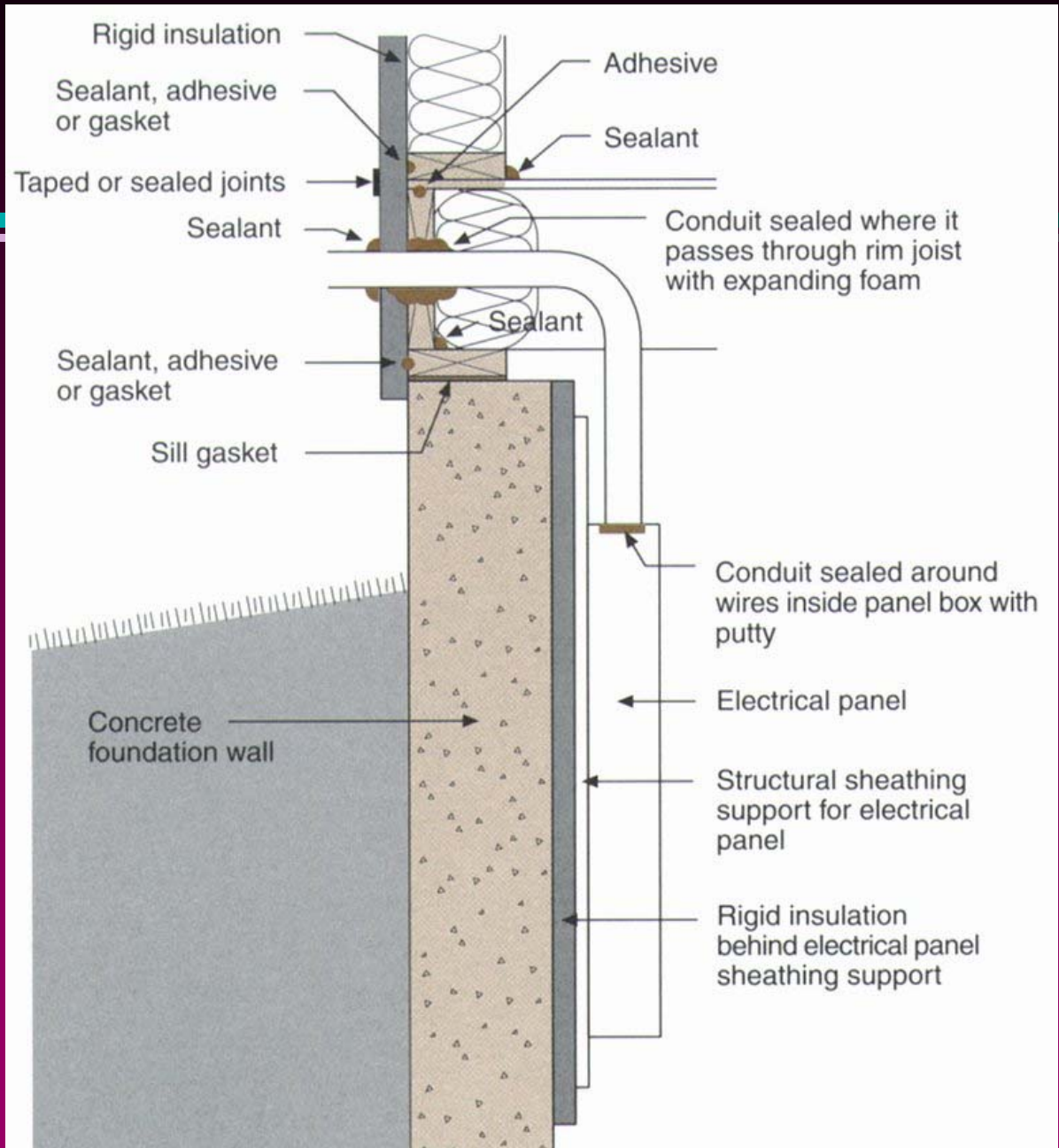
Electrical Boxes





Comfort Plus Homes™

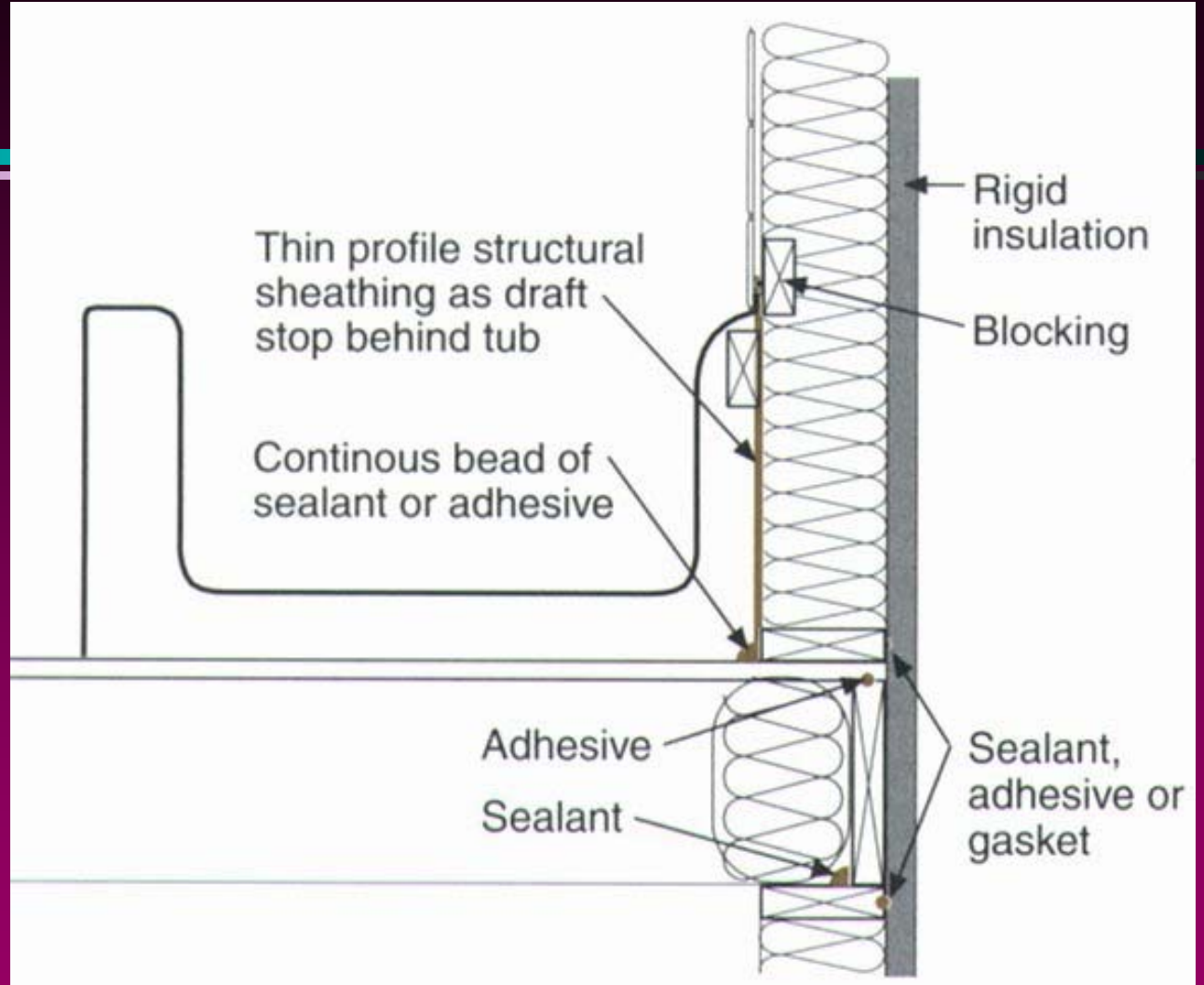
Electrical Service Sealing





Comfort Plus Homes™

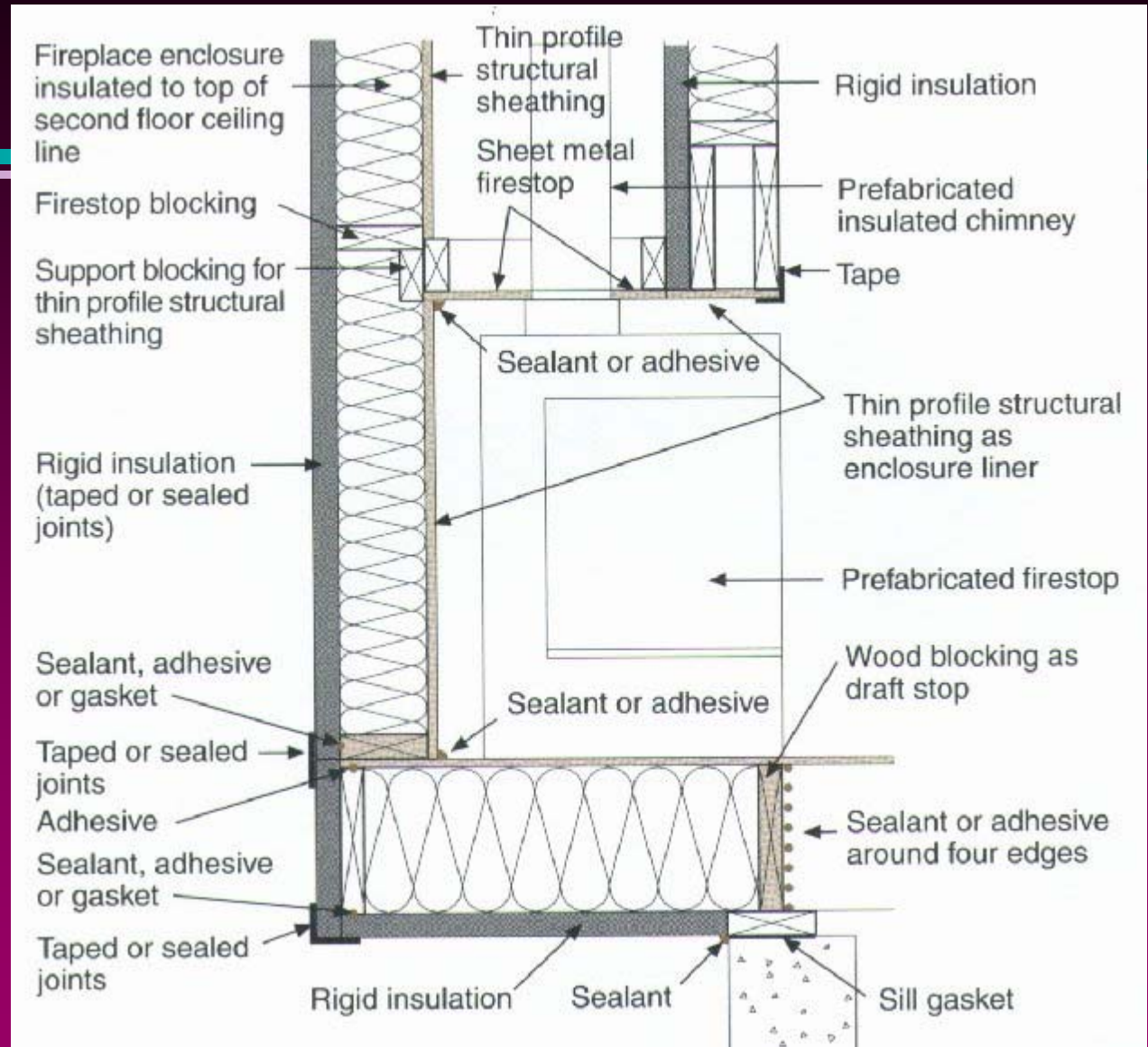
Bath Tub Installation





Comfort Plus Homes™

Fireplace Detail



Ceilings/Roofs

**Need Special Attention to
Stop Air Leaks**



Key Points

Ceilings and Roofs

- **Select a roof truss that allows for adequate insulation/ventilation at top of exterior wall**
- **Install baffles at roof edge to allow ventilation and prevent windwashing of insulation**
- **Install a combination of continuous soffit and ridge vents -- never use powered ventilators**
- **Avoid unnecessary ceiling penetrations such as recessed lights**
- **Seal all penetrations into the ceiling/attic**



Comfort Plus Homes™

Roof Truss Options

- **Raised Heal Truss**
- **Cantilevered Truss**



Comfort Plus Homes™

Hot Roof Detail

The inside face of the roof sheathing forming the cavity is the first condensing surface

OSB or plywood nail base for shingles

R-28 ceiling insulation between 2x6 rafters

R-12 rigid insulation

Water protection membrane (ice dam protection where required)

Sealant

Continuous soffit vent

Vinyl or aluminum siding

Rigid insulation (taped or sealed joints) notched around rafters

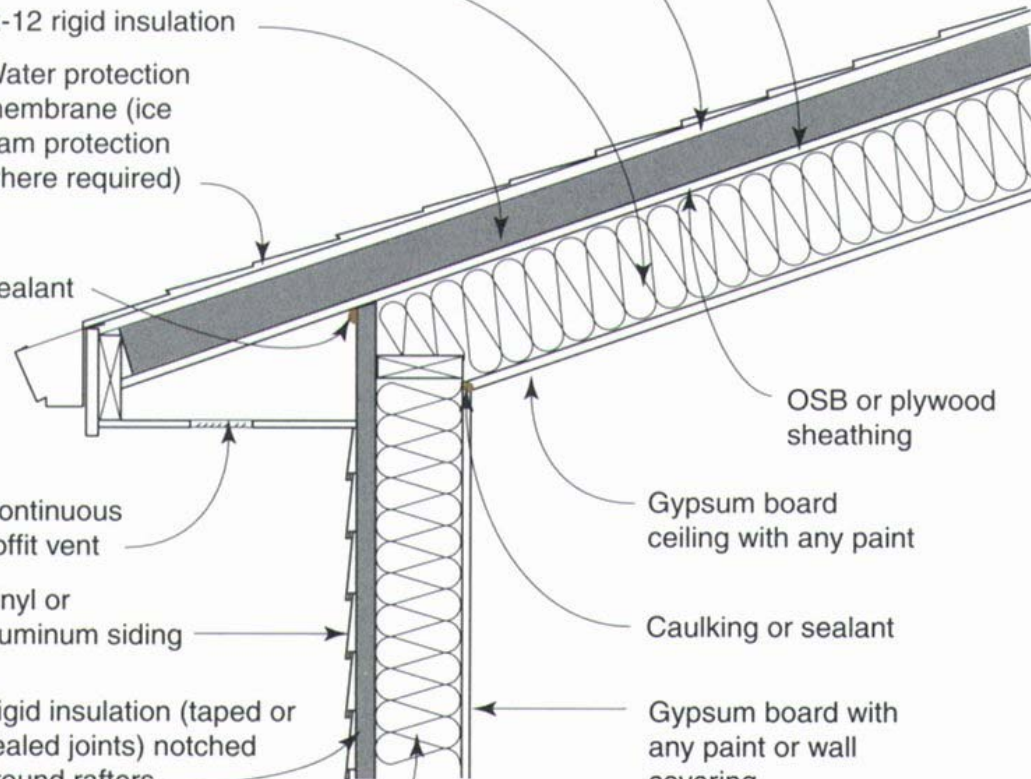
Cavity insulation with vapor retarder backing

OSB or plywood sheathing

Gypsum board ceiling with any paint

Caulking or sealant

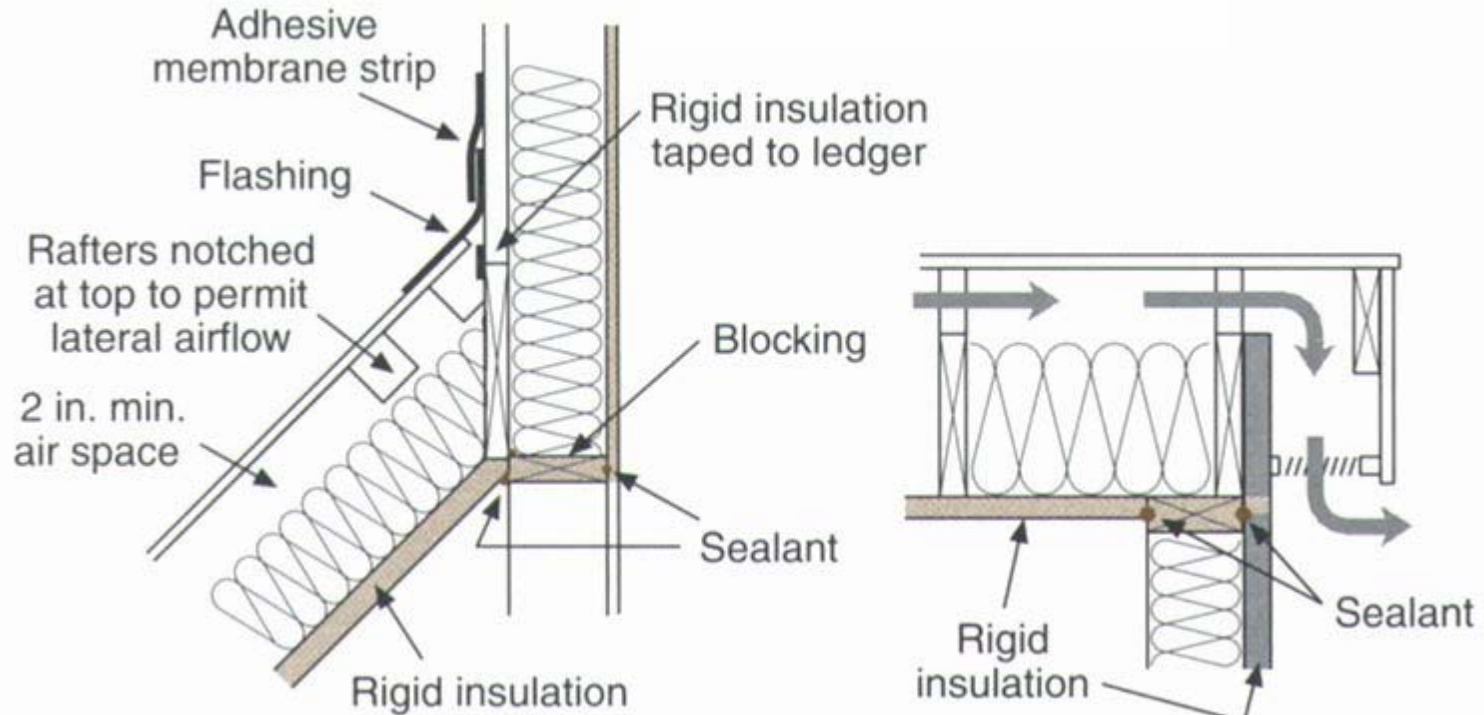
Gypsum board with any paint or wall covering





Comfort Plus Homes™

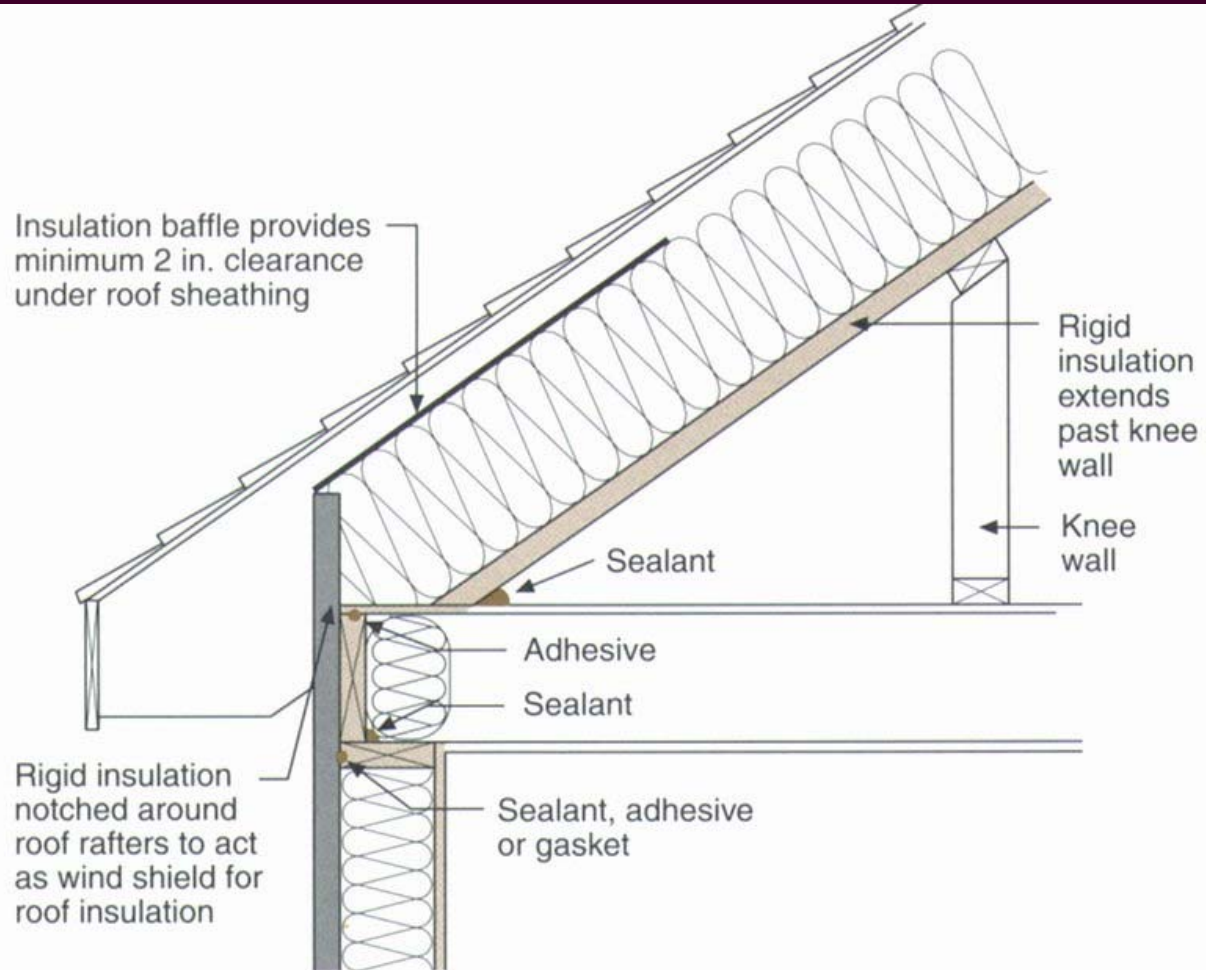
Vented Shed Roofs





Comfort Plus Homes™

Knee Walls



Handling Ceiling Penetrations



Comfort Plus Homes™

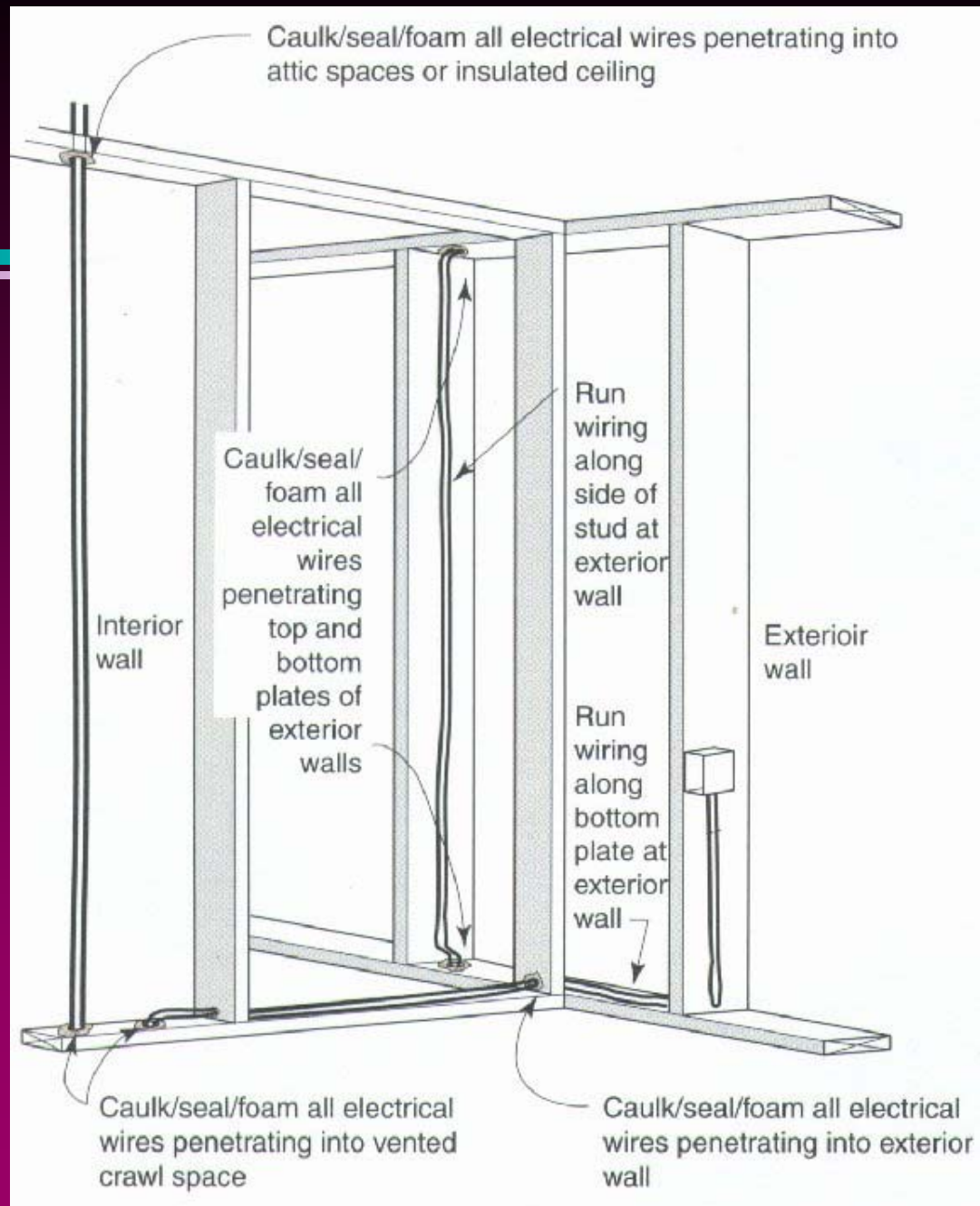
Ceiling Penetrations

- **Wires at top of interior walls**
- **Ceiling light fixtures**
- **Recessed lights**
- **Utility Chases**
- **Plumbing stacks**
- **Flue pipes**
- **Attic hatches**
- **Dropped soffits**



Comfort Plus Homes™

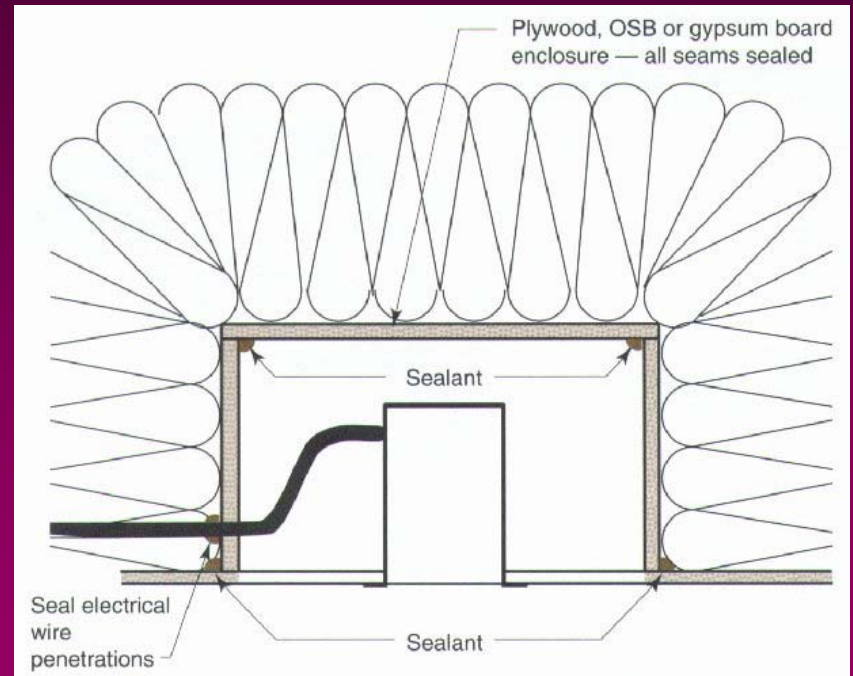
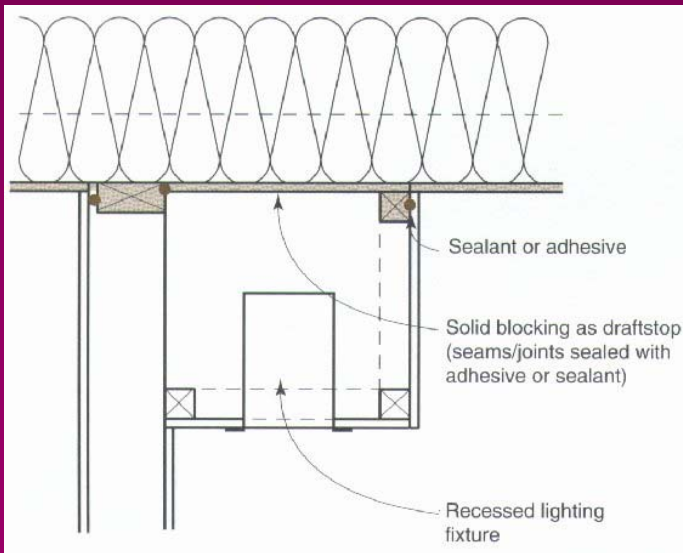
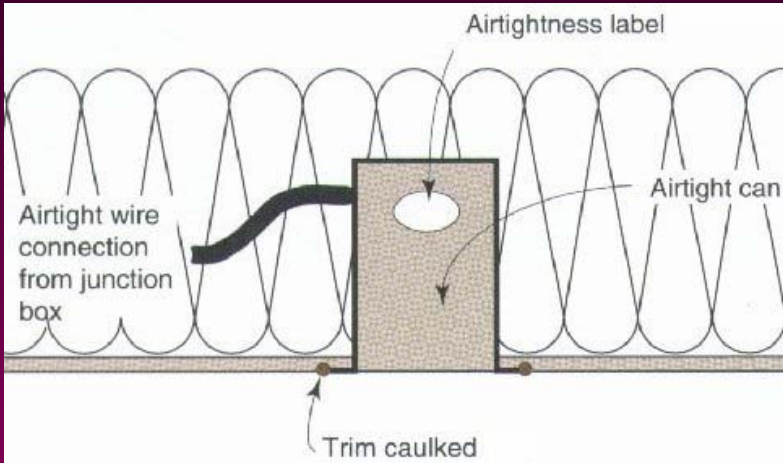
Electrical Wiring





Comfort Plus Homes™

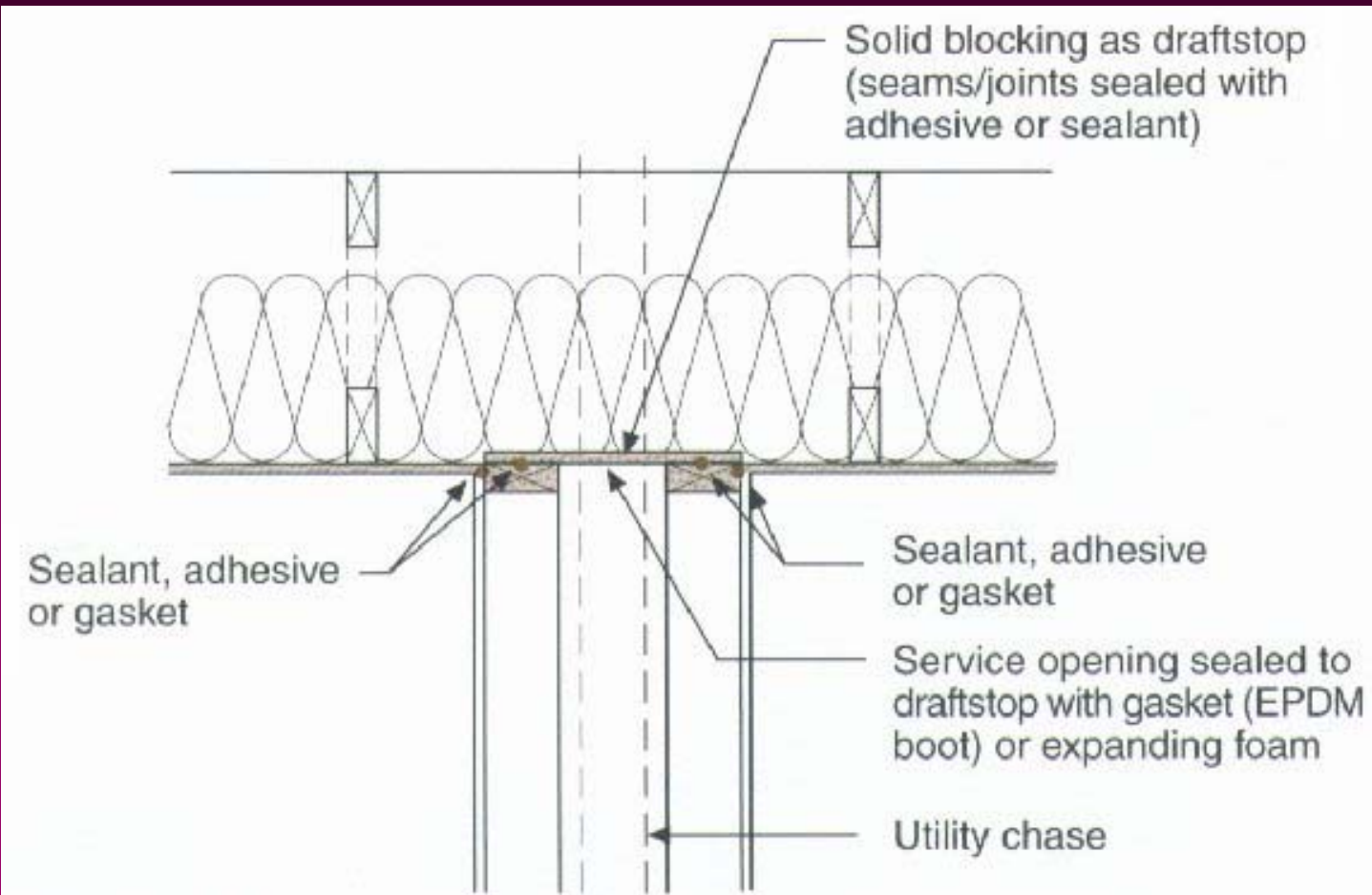
Recessed Light Options





Comfort Plus Homes™

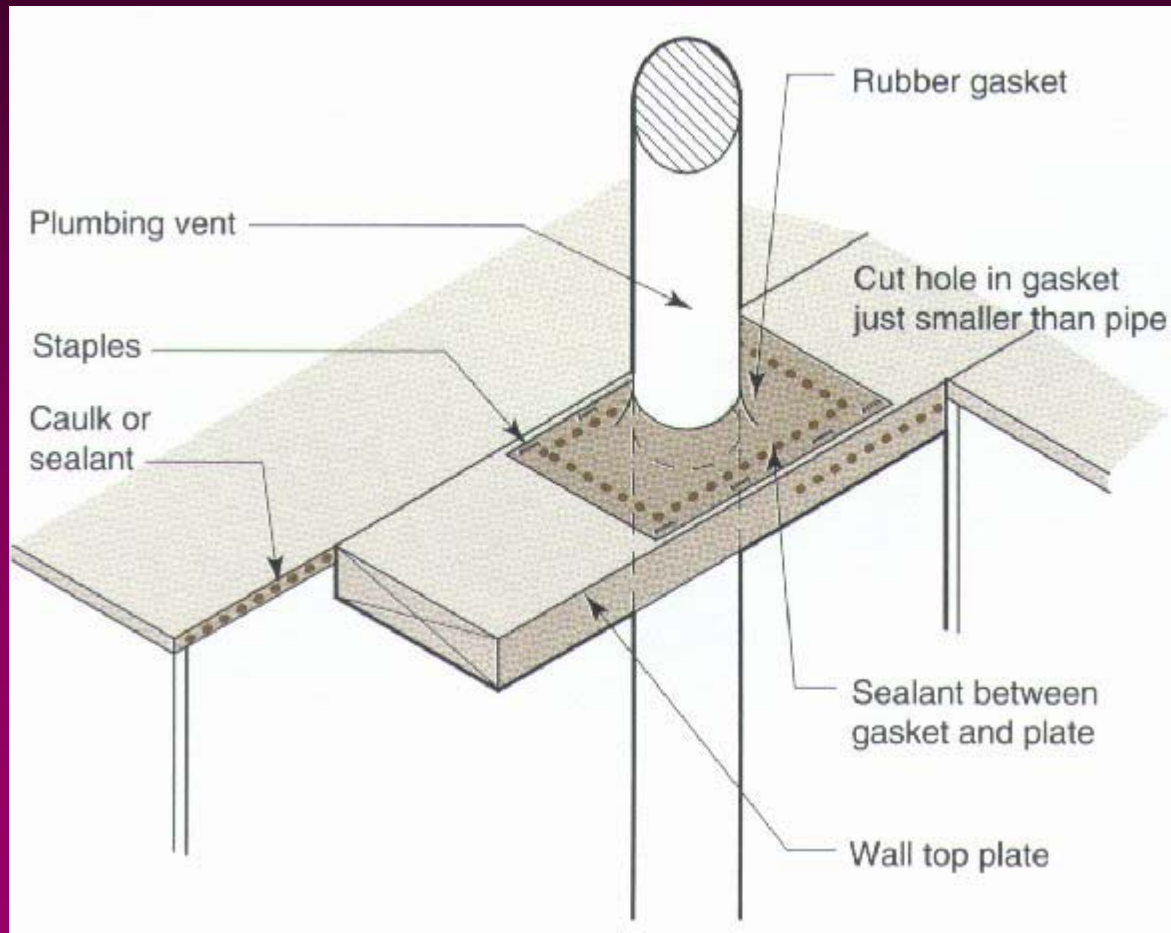
Utility Chase





Comfort Plus Homes™

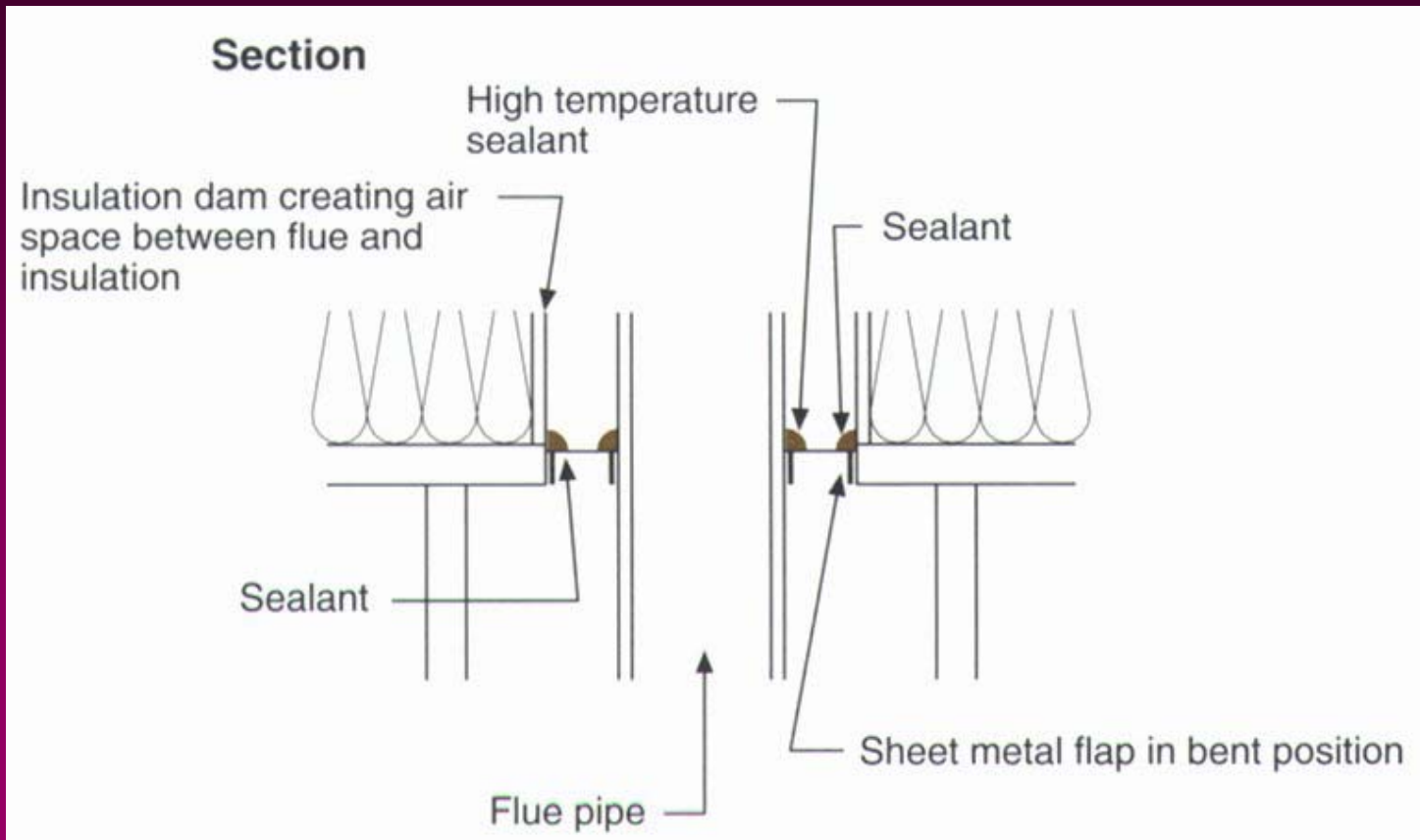
Plumbing Stack





Comfort Plus Homes™

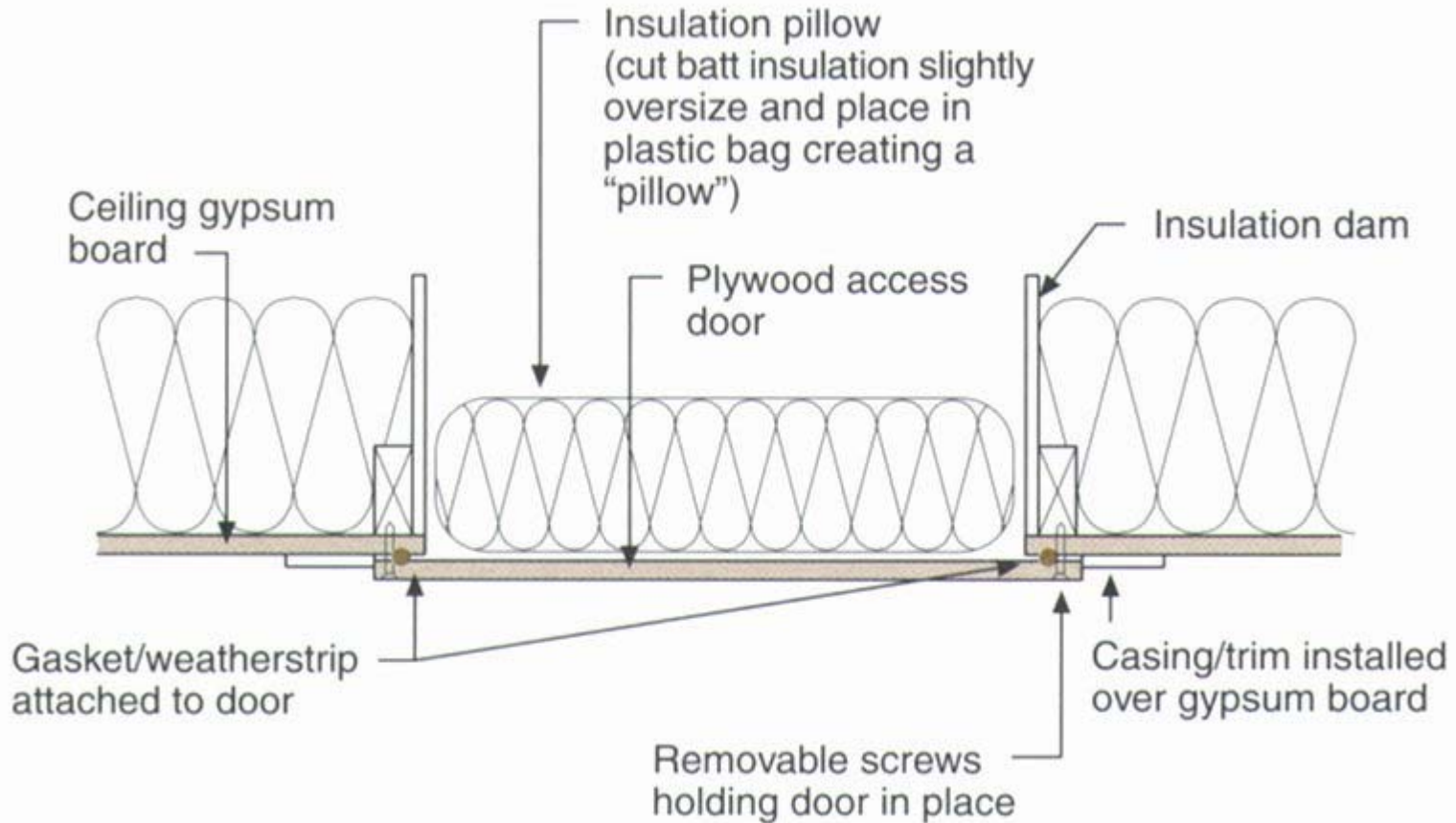
Flue Stack





Comfort Plus Homes™

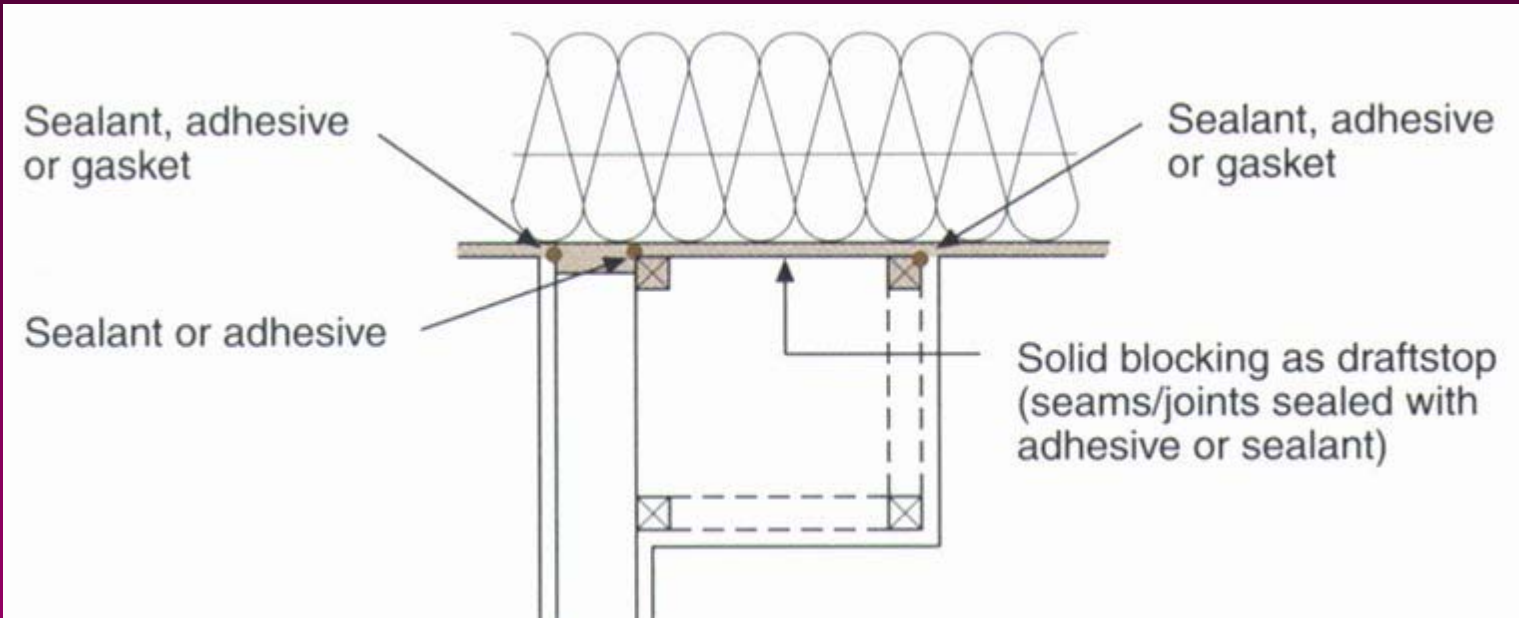
Attic Hatches





Comfort Plus Homes™

Dropped Soffits



Insulation

Stuff that keeps us warm



Comfort Plus Homes™

Key Points - Insulation

- **Any insulation will work if properly installed in a properly constructed building envelope**
- **All insulation is environmentally friendly, even the rigid foams because of the sheer quantity of energy they save over their useful service lives**
- **All walls and ceilings need vapor diffusion retarders**



Comfort Plus Homes™

Key Points - Fiberglass

- **Do not cut batts too short or too long**
- **Do not compress batts into small areas**
- **Fluff batts to full thickness**
- **Split batts around electrical wiring**
- **Run wires along the bottom of studs so batts don't have to be split**
- **Either face staple batts or use unfaced batts, but don't use inset stapling**
- **Using higher density batts will improve the quality of the installation**



Comfort Plus Homes™

Key Points - Cellulose

- **Use damp sprayed cellulose only with permeable sheathings**
- **Dry spray cellulose can be used with any type of sheathing**
- **In a poorly constructed wall, cellulose will stop more air movement than fiberglass**



Comfort Plus Homes™

Other Insulation

- **Icynene foam is available**
- **Expanded polystyrene is not a vapor barrier**
- **Extruded polystyrene is a vapor barrier**

Mechanical Systems

**Heating, Ventilating, Air
Conditioning, and Water
Heating**

Ductwork

Key to an efficient system



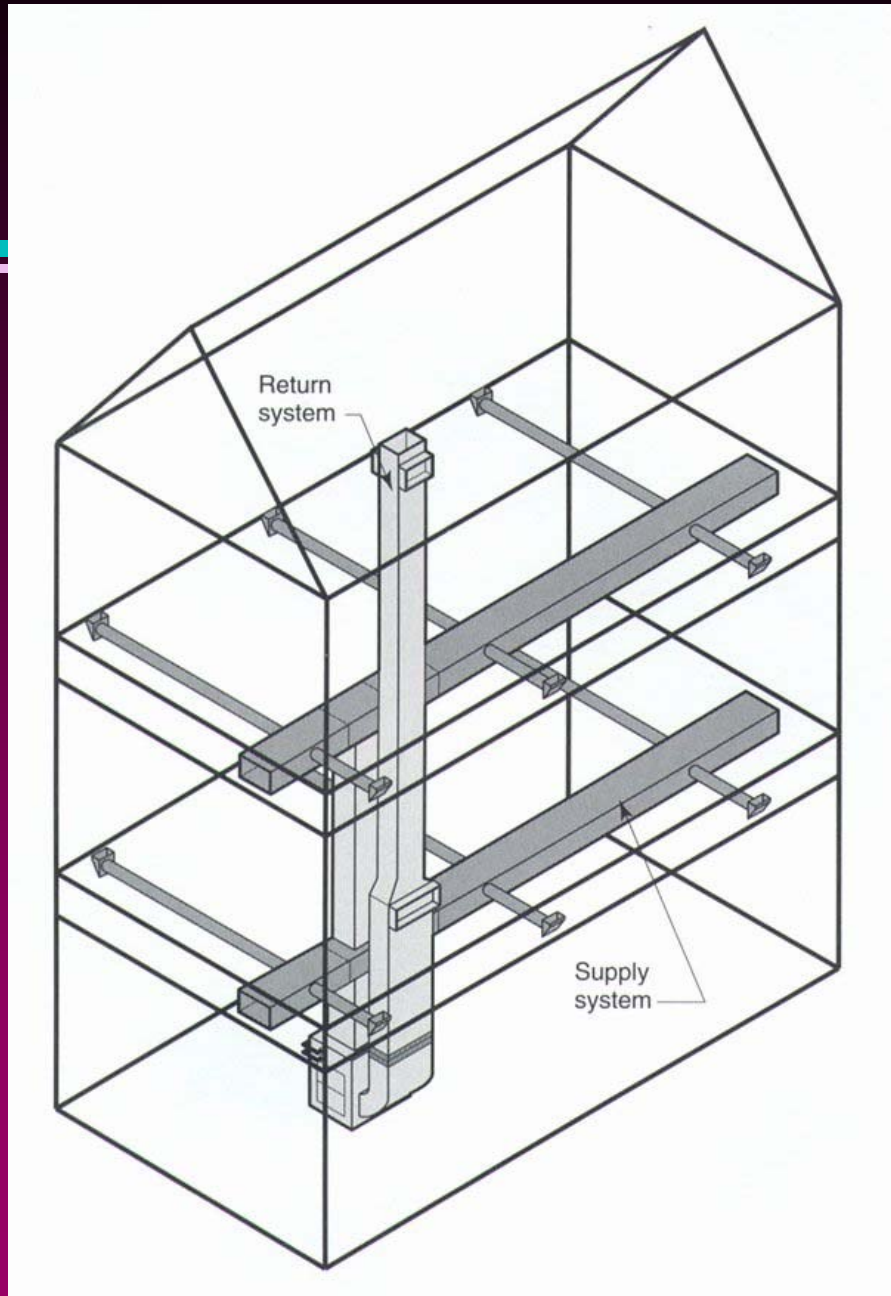
Key Points - Ductwork

- **Locate air handler in a central location**
- **No ductwork in exterior walls or attic**
- **Install high return in hallway of upper floor**
- **Install low return in hallway of main level**
- **Do not install returns in basement**
- **Install only “hard” ducted returns when connected directly to air handler; no panned floor joist returns; no stud cavity returns**
- **Either return ducts in bedrooms or transfer grills**
- **Seal all duct work with mastic**



Comfort Plus Homes™

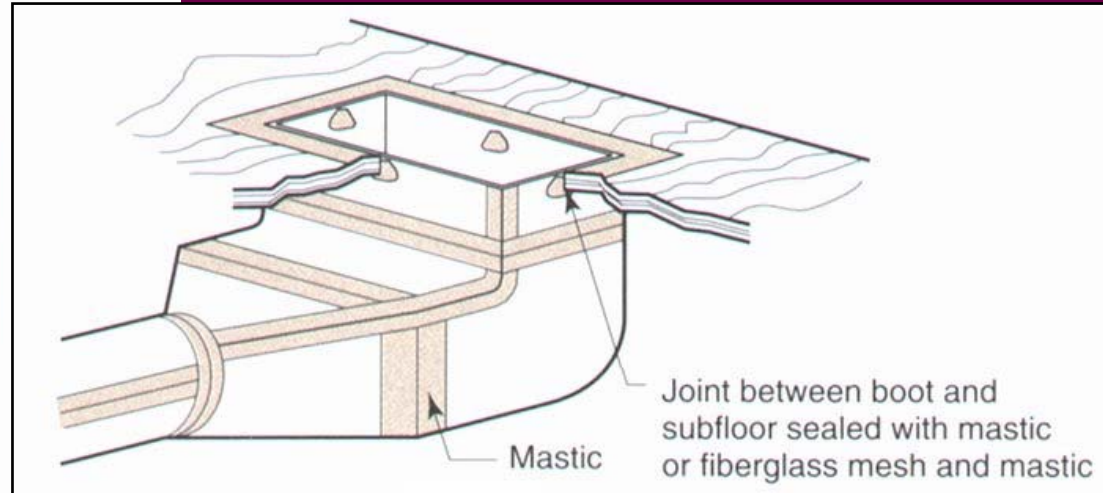
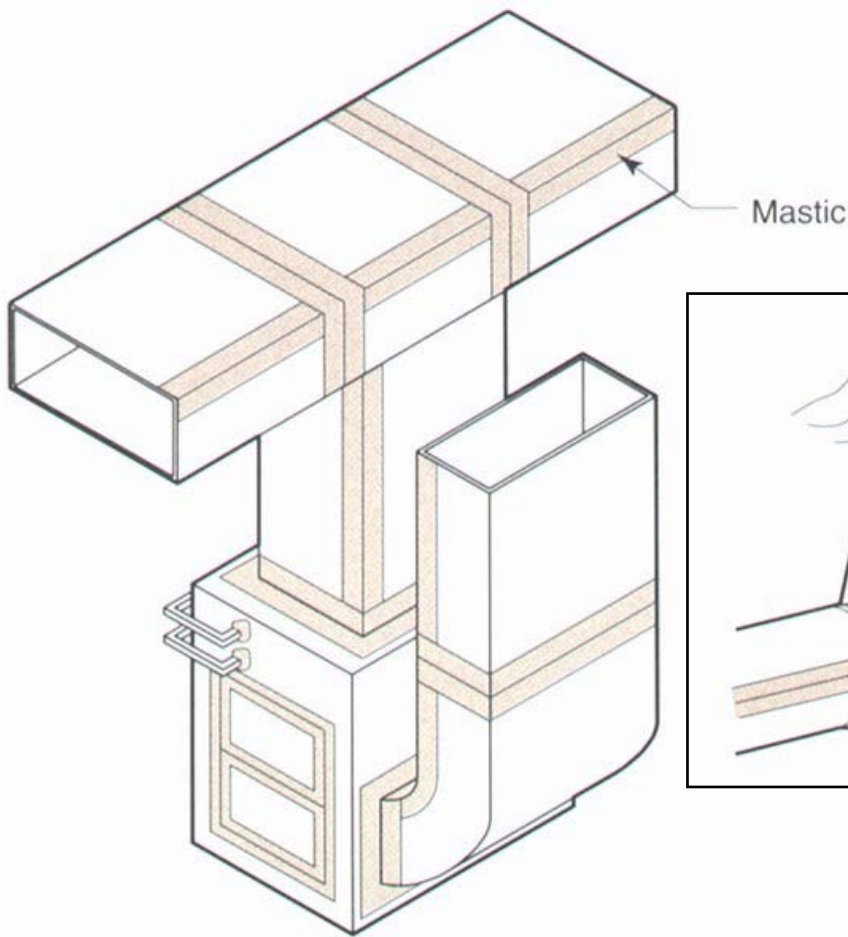
Air Handler and Duct Layout





Comfort Plus Homes™

Duct Sealing



Heating Systems

**Keeping clients warm in
winter**



Comfort Plus Homes™

Best Heating System Options

- **Air-to-air heat pump**
- **Ground water heat pump**
- **Induced draft gas furnace**
- **Sealed combustion gas furnace**
- **Sealed combustion or power vented water heater with fan coil**



Comfort Plus Homes™

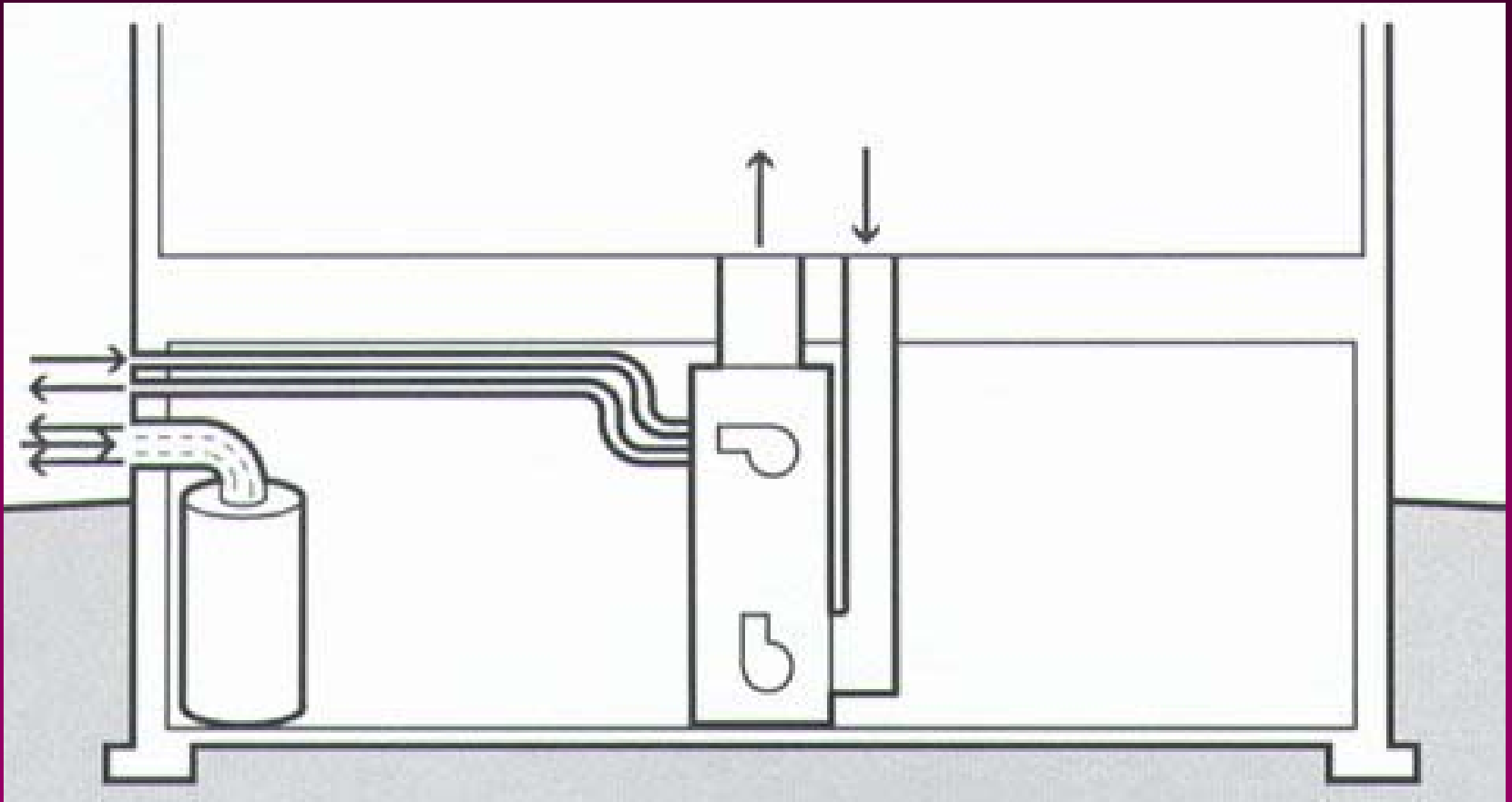
Key Points - Heating Systems

- **If gas is chosen, install only induced draft or sealed combustion**
- **Install an auto-setback thermostat for clients**
- **Don't spend a lot of money on a heating system for a house that doesn't need much heat**



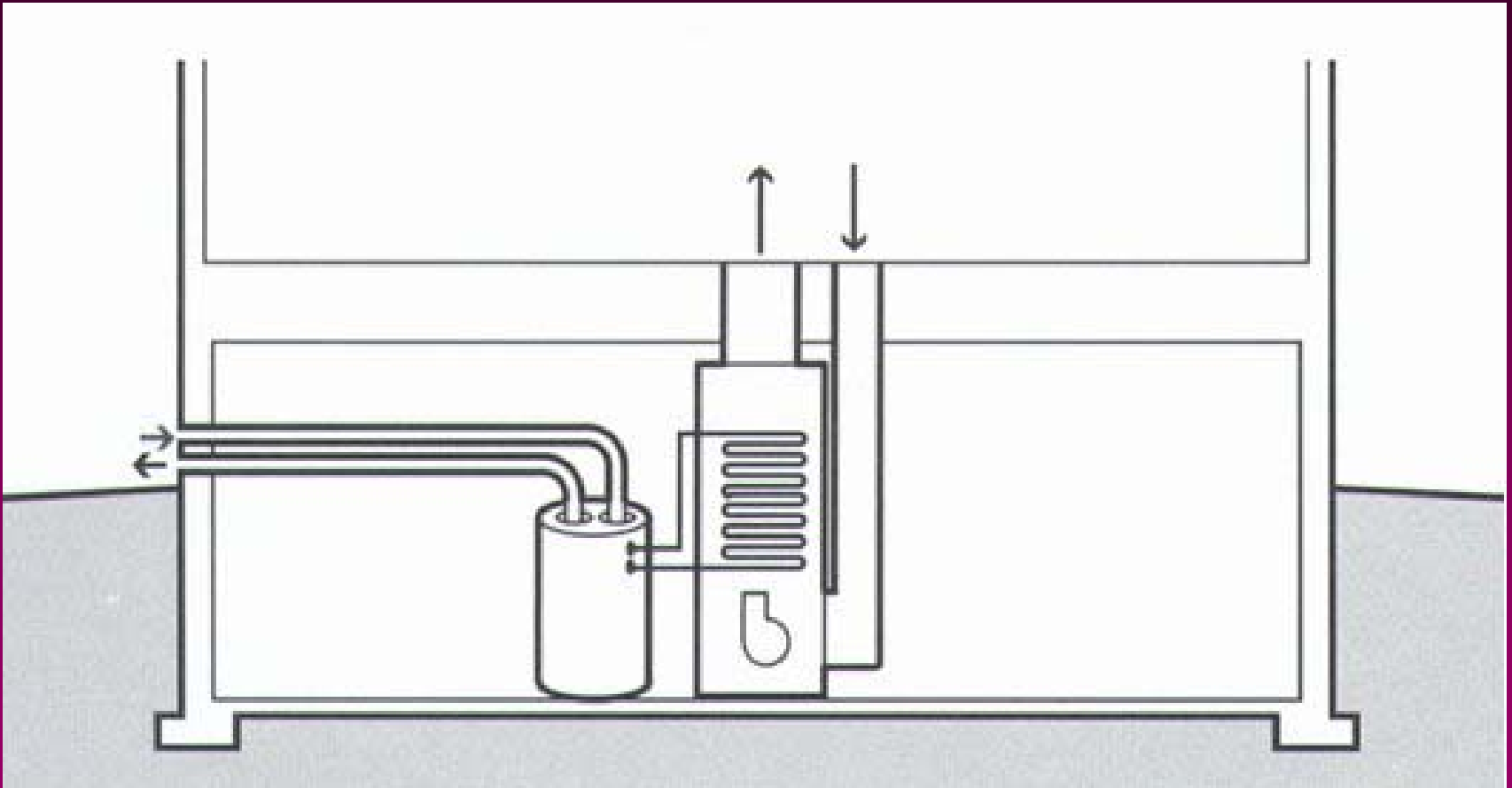
Comfort Plus Homes™

Sealed Combustion System





Water Heater - Fan Coil



Cooling Systems

**Keeping clients cool in the
summer**



Comfort Plus Homes™

Designing for Cooling Efficiency

- **Minimize west windows**
- **Design overhangs for south windows**
- **Provide shading for east and west windows**
- **Install ceiling fans in bedrooms and other living areas of the home**
- **Install a whole-house fan as an alternative or supplement to air conditioning**



Key Points - Air Conditioning

- **Sizing is critical to efficient operation - DO NOT OVERSIZE**
- **Oversizing leads to frequent cycling, inadequate dehumidification, higher costs to your clients, and lower equipment life.**
- **Seal all duct work with mastic**
- **Insulate ducts in unconditioned spaces**
- **Locate condenser unit where it will be in the shade**

Controlled Ventilation

**A must for a quality
Comfort Plus Home**



Comfort Plus Homes™

Reasons for Controlled Ventilation

- Provides a healthy indoor environment
- Solves most moisture related callback problems
- Saves energy



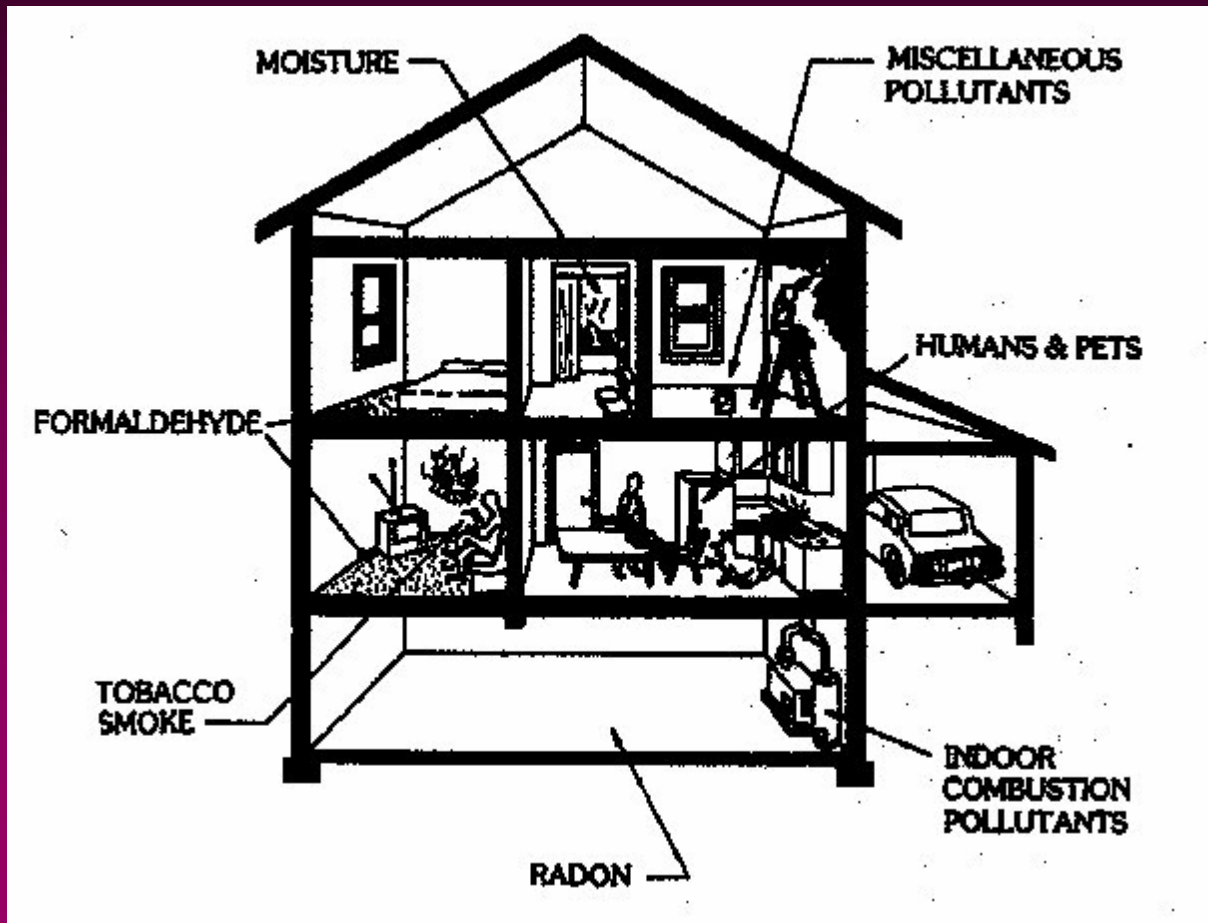
Key Points - Controlled Ventilation

- **Buildings can never be built too tight - they can, however, be under ventilated**
- **A leaky building is over ventilated during the winter when the stack effect is strongest**
- **A leaky building is under ventilated during the summer when there is no stack effect**
- **Install a controlled ventilation system that operates when people are present**
- **Rule of thumb: Take number of bedrooms plus one and ventilate at 10 cfm per**
- **If there are strong interior pollutants (smokers, untrained house pets, etc.), Increase ventilation**



Comfort Plus Homes™

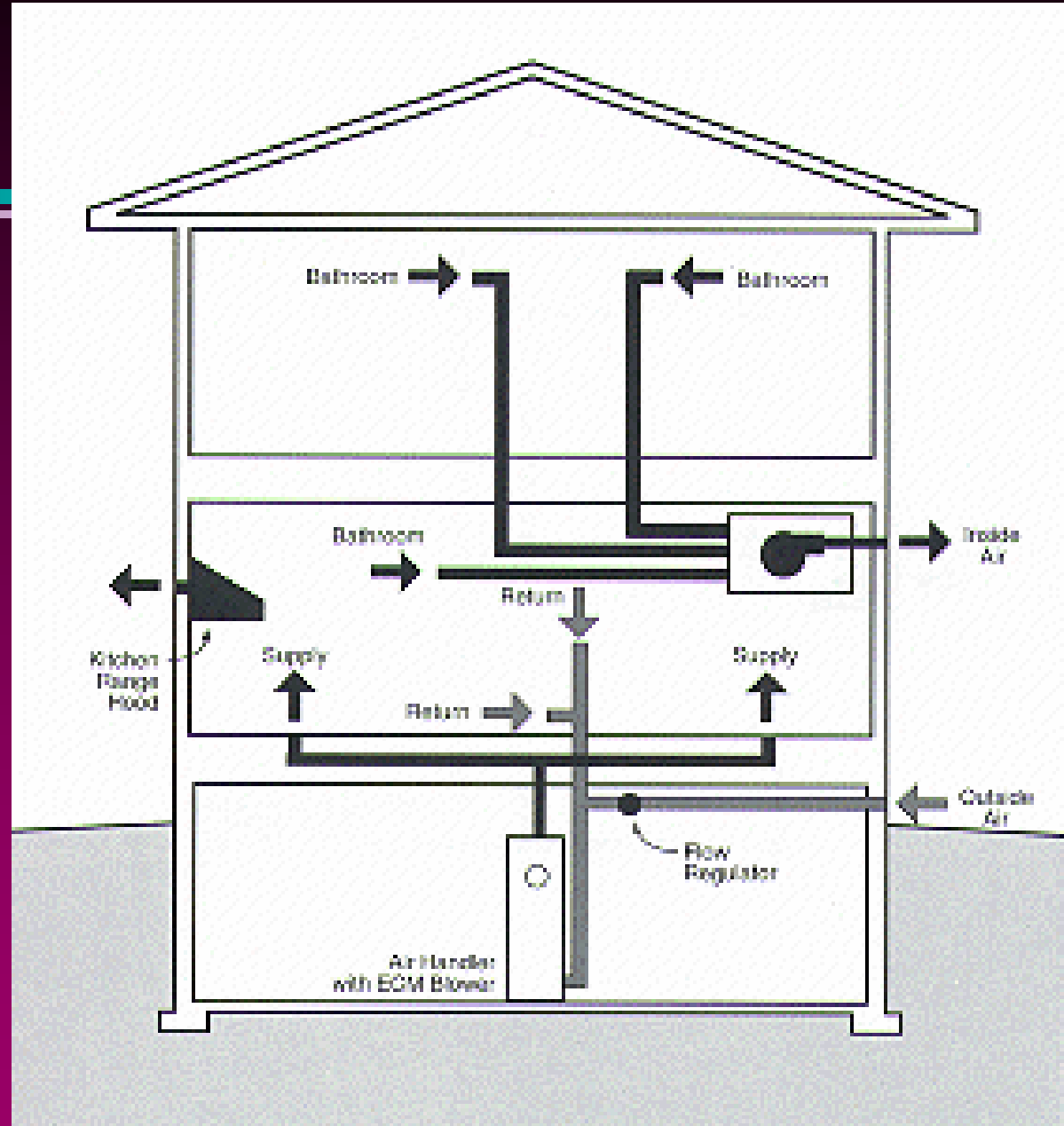
Indoor Air Quality Problems





Comfort Plus Homes™

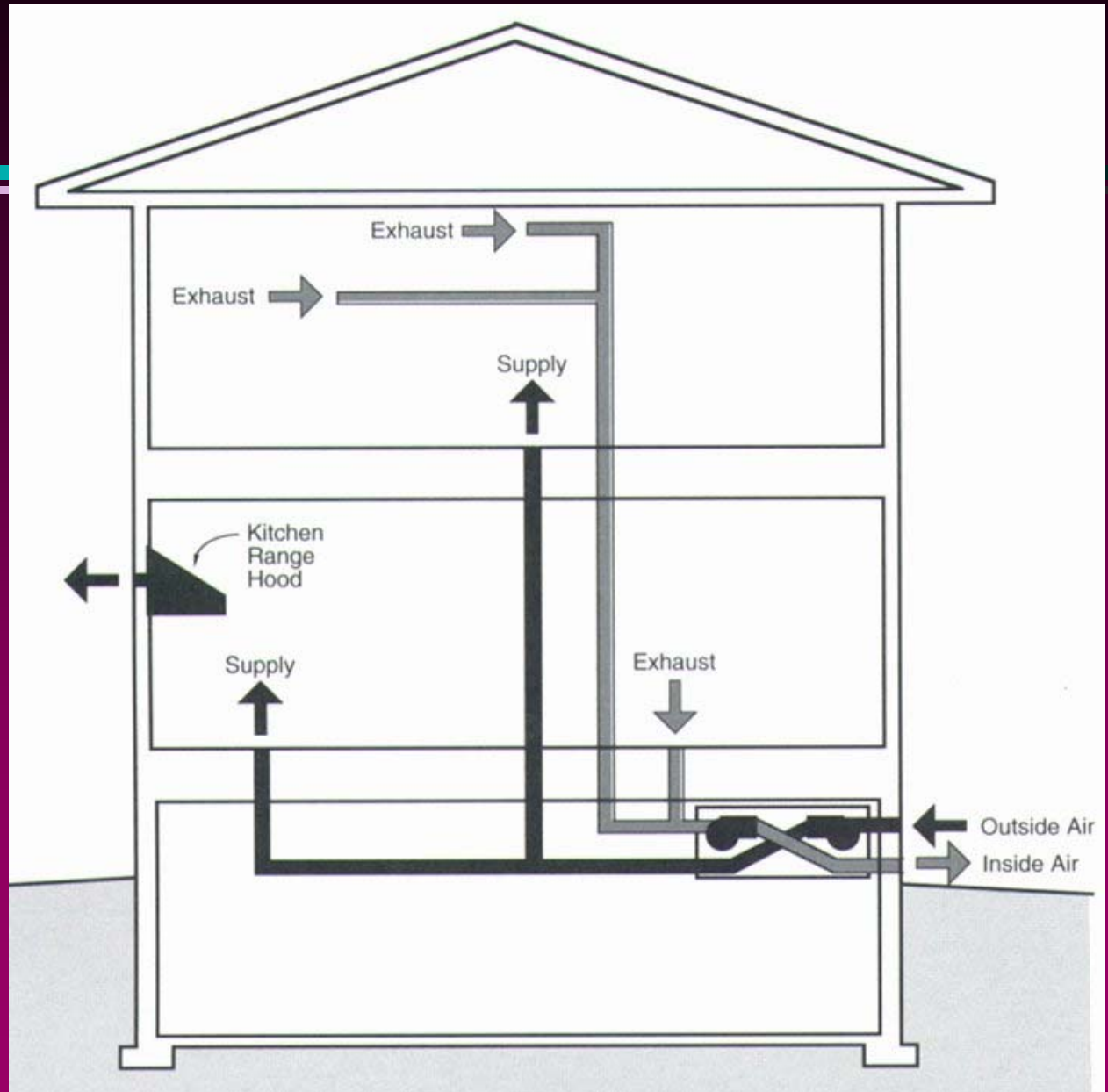
Central Exhaust System





Comfort Plus Homes™

Air-to-Air Heat Exchangers



Water Heating Systems

**Everyone wants a hot
shower**



Comfort Plus Homes™

Keys Points - Water Heating

- **Install a high efficiency water heater**
- **Locate water heater close to points of use**
- **Insulate first 10 feet of hot and cold pipe**
- **Install heat traps on top of water heater**
- **Install 2.0 Gal/min showerheads and kitchen faucets**
- **Install 1.5 Gal/min lav faucets**



Acceptable Water Heating Systems

- **Sealed combustion, direct vent**
- **Power vented**
- **Combination systems**

Lighting System

**Nobody likes to sit
in the dark**



Comfort Plus Homes™

Key Points - Efficient Lighting

- **Plan window locations to provide adequate lighting during daylight hours**
- **Decorate with light colors to make the home seem brighter**
- **If installing ceiling fixtures, make sure fixtures are adequately sealed**
- **Provide low level general illumination with task lights for specific working/reading areas**



Comfort Plus Homes™

Keys Points - Efficient Lighting

- **Use track lights instead of recessed lights**
- **Multi-bulb fixtures are a poor choice. Larger wattage bulbs are more efficient than several smaller wattage bulbs**
- **Use fluorescents or compact fluorescents where possible**
- **You can use indirect fluorescent lighting effectively**

Appliances

Gotta have 'em . . .



Comfort Plus Homes™

Key Points - Appliances

- **Don't locate refrigerator next to the range**
- **A gas range is not recommended for an energy efficient home**
- **Indoor grills should only be installed with a provision for make-up air**
- **Never duct a clothes dryer into the house**
- **Select dishwasher with energy-saving cycle**



Key Points - Appliances

- **Install central vac as it provides a much healthier indoor environment for you clients**
- **If appliances are not included, provide clients with a list of energy-efficient appliances**

Landscaping

More than pretty flowers



Comfort Plus Homes™

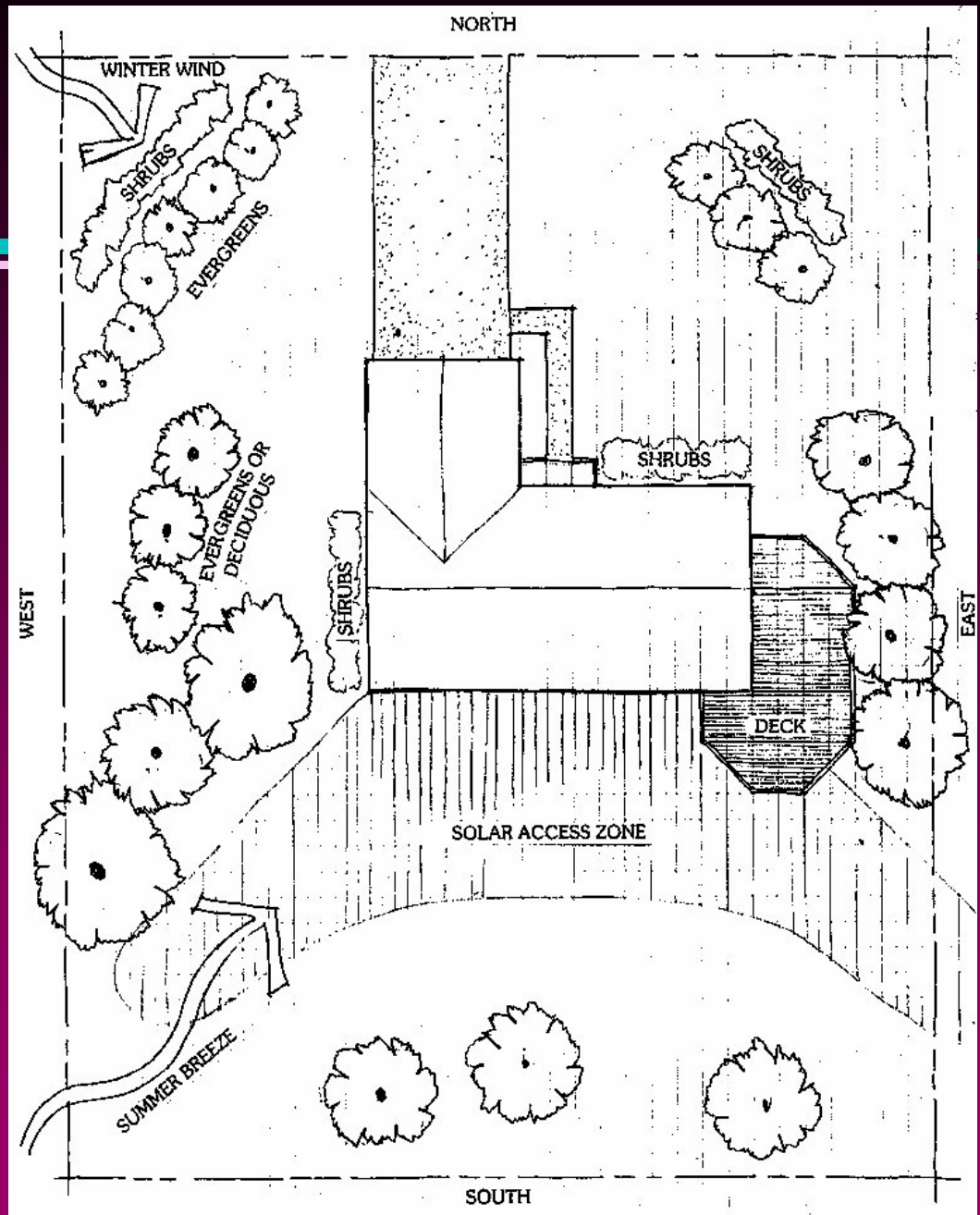
Key Points - Landscaping

- **Protect existing trees**
- **Keep trees on the south at least twice as far from the house as the trees mature height**
- **Plant trees that will shade east and west windows which receive over 50% more solar gain than south windows in the summer**
- **Plant wind breaks on the north and west**
- **Minimize concrete and asphalt as it raises the temperature of the air around the house**



Comfort Plus Homes™

Ideal Landscaping



Green Building

**For those interested in
environmentally friendly
housing**



Comfort Plus Homes™

Green Building

- **Protect trees and natural features on site during construction**
- **Save and reuse all site topsoil**
- **Locate home on lot so that long dimension faces within 30 degrees of south**
- **Save east and south areas for outdoor use**
- **Use permeable materials for walkways, patios, and driveways**
- **Use low-water grass such as blue gramma or fescue**
- **Xeriscape with native drought resistant plants**
- **Setup rainwater recovery from roof for watering**



Comfort Plus Homes™

Green Building

- **Minimize job waste by using materials wisely and recycling**
- **Provide garage sorting bins for recycled materials**
- **Provide built-in kitchen recycling center**
- **Use non-asphalt damp proofing on foundation**
- **Use western coal fly ash concrete or regionally produced brick, rock, or block**
- **Use frost-protected shallow foundation where applicable**



Comfort Plus Homes™

Green Building

- **Avoid large dimension solid lumber, instead use engineered “I” joists for floors**
- **Use trusses or “I” joists for roofs**
- **Use engineered lumber products for beams, joists, and headers**
- **Use optimum value engineered framing (24” o.C. Framing and other material reducing strategies)**
- **Use finger-jointed plate material**
- **Use engineered stud materials**



Comfort Plus Homes™

Green Building

- **Construct outdoor structures from recycled materials, pressure-treated engineered lumber or certified sustainably harvested lumber**
- **Use urea formaldehyde-free subfloor and underlayment materials**
- **Use oriented strand board (OSB) for roof and floor sheathing from fast growth material**
- **Use fiberglass (class A), recycled-content, or 30-year roofing materials**
- **Use recycled-content fascia, soffit and trim**



Comfort Plus Homes™

Green Building

- **Don't use Luan doors (tropical hardwood)**
- **Use recycled content doors**
- **Use finger-jointed wood or vinyl framed windows**
- **Paint all exposed particle board with water-based sealer (inside cabinets, underside of counter tops)**
- **Use finger-jointed trim**
- **Install cabinets made with formaldehyde-free particle board**



Comfort Plus Homes™

Green Building

- **Uses paints and finishes with low VOC content (< 250 grams/liter)**
- **Use only low toxicity, solvent free adhesives**
- **Use water-based urethane and lacquer finishes on wood floors and woodwork**
- **Use recycled-content or natural material carpet**
- **Use tacks instead of gluing carpet**
- **Use natural linoleum with low toxic adhesives and backing**
- **Use recycled content ceramic tile**

Commissioning

Testing how well you did



Comfort Plus Homes™

Commissioning

- **To qualify for a Comfort Plus Homes incentive, you have to have a rating performed by a certified Energy Rated Homes of Iowa rater**
- **Conduct blower door test**
- **Conduct duct leakage test**
- **Equipment testing and cycling**
- **Radon and carbon monoxide tests**

Comfort Plus Homes

Summary



Comfort Plus Homes™

Comfort Plus Homes Summary

- **Dedicate yourself to quality**
- **Pay attention to detail**
- **Make sure you communicate your expectations to your crew and your subs**
- **Use your dedication to quality and efficiency in your marketing**
- **Test your house upon completion and verify that you did indeed build a quality house**
- **Get your Energy Rated Homes of Iowa rating**



Comfort Plus Homestm

**Building & Design
Ideas**